



PHASE III DRILL PROGRAM RESULTS
Montagne d'Or Gold Deposit
 Isnard, French Guiana

as at 2015-12-10

HOLE #	LENGTH (m)	SECTION		FROM	TO	Au (g/t)	CORE LENGTH (m)	TRUE THICKNESS (m)	ZONE
MO15233	50.0	2600E		No significant values					
MO15234	65.0	2600E		34.0	38.0	5.94	4.0	3.1	LFZ
MO15235	55.0	2550E		22.0	25.0	5.99	3.0	2.3	LFZ
MO15236	55.0	2500E		No significant values					
MO15237	65.0	2500E		No significant values					
MO15238	75.0	2550E		43.0	51.0	4.56	8.0	6.3	LFZ
MO15239	100.0	2550E		42.0	45.0	8.88	3.0	2.3	LFZ
				88.0	90.0	5.26	2.0	1.6	LFZ
MO15241	141.6	2500E		121.6	133.4	2.85	11.8	8.9	LFZ
			Incl	127.0	132.1	4.89	5.1	3.9	
MO15244	63.0	2600E		25.0	44.0	0.75	19.0	15.0	LFZ
			Incl	27.0	33.0	0.98	6.0	4.7	
MO15245	90.0	2600E		58.0	64.0	1.38	6.0	5.1	UFZ
MO15260	91.0	2650E		51.0	91.0	1.95	40.0	34.0	UFZ
			Incl	52.0	59.0	6.70	7.0	5.7	
MO15261	72.0	2650E		15.0	27.0	1.64	12.0	9.1	UFZ
			Incl	22.0	26.0	3.44	4.0	3.1	
				30.0	49.0	0.70	19.0	15.8	UFZ
MO15262	40.0	2650E		18.0	29.0	0.92	11.0	8.6	UFZ
MO15263	151.0	2700E		95.5	104.8	1.43	9.3	6.5	LFZ
MO15264	48.0	2700E		20.0	41.0	2.47	21.0	16.1	LFZ
			Incl	27.0	33.0	5.29	6.0	4.6	
MO15265	48.0	2700E		No significant values					
MO15266	48.0	2700E		No significant values					
MO15267	45.0	2850E		2.0	6.0	2.07	4.0	3.1	LFZ
MO15268	70.0	2850E		32.0	38.0	1.28	6.0	4.6	LFZ
				46.0	66.0	1.07	20.0	15.3	LFZ
			Incl	56.0	59.0	2.89	3.0	2.3	
MO15269	65.0	2890E		24.0	36.0	4.68	12.0	9.2	LFZ
			Incl	28.0	33.0	10.62	5.0	3.8	
				62.0	65.0	3.78	3.0	2.3	LFZ
MO15270	50.0	2930E		14.0	19.0	1.21	5.0	3.7	LFZ

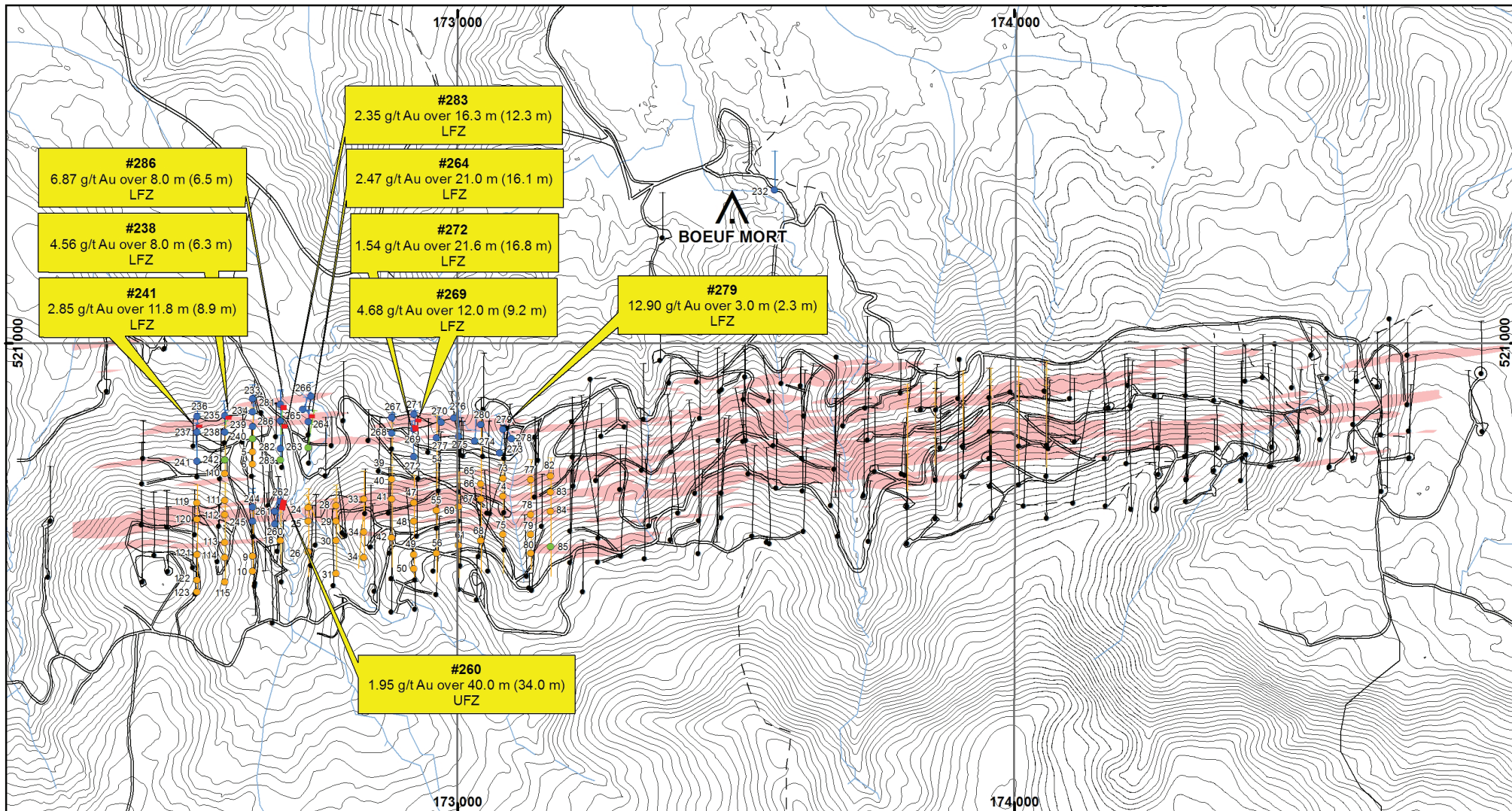
HOLE #	LENGTH (m)	SECTION		FROM	TO	Au (g/t)	CORE LENGTH (m)	TRUE THICKNESS (m)	ZONE
MO15271	35.6	2890E		No significant values					
MO15272	135.0	2890E		18.0	21.0	2.51	3.0	2.3	LFZ
				97.7	119.3	1.54	21.6	16.8	LFZ
			Incl	115.6	119.3	5.28	3.7	2.9	
MO15273	90.0	3050E		No significant values					
MO15274	90.0	3010E		33.0	48.0	1.21	15.0	12.6	LFZ
			Incl	42.0	47.0	2.41	5.0	4.2	
MO15275	99.0	2970E		20.0	35.0	0.96	15.0	12.1	LFZ
			Incl	31.0	34.0	2.46	3.0	2.4	
MO15276	55.0	2970E		2.0	14.0	1.65	12.0	9.0	LFZ
			Incl	2.0	5.0	3.17	3.0	2.3	
		2970E		11.0	14.0	2.99	3.0	2.2	LFZ
MO15277	78.0	2930E		34.0	47.0	1.23	13.0	9.8	LFZ
			Incl	44.0	47.0	3.90	3.0	2.3	
MO15278	70.0	3050E		9.0	20.0	0.92	11.0	8.2	LFZ
MO15279	50.0	3050E		17.0	20.0	12.90	3.0	2.3	LFZ
MO15280	50.0	3010E		No significant values					
MO15281	50.1	2650E		No significant values					
MO15282	150.2	2650E		82.6	100.6	1.10	17.9	13.2	LFZ
			Incl	85.0	92.0	2.12	7.0	5.2	
				135.7	142.7	0.99	7.0	5.2	LFZ
MO15283	142.0	2650E		115.6	131.9	2.35	16.3	12.3	LFZ
			Incl	124.8	126.9	10.42	2.1	1.6	
MO15286	192.1	2650E		34.0	42.0	6.87	8.0	6.5	LFZ

www.columbusgold.com

2015 RC and DDH COMPLETED

Montagne d'Or Gold Deposit

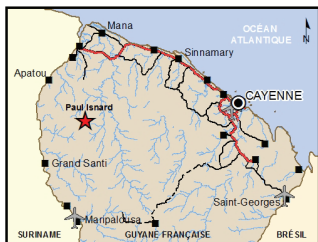
Paul Isnard, French Guiana



2015 RC AND DDH COMPLETED
PAUL ISNARD PROJECT
MONTAGNE D'OR

PLAN DES SONDAGES CAROTTÉS ET RC COMPLÉTÉS 2015
PROJET PAUL ISNARD
MONTAGNE D'OR

Date: 22 Nov 2015



Legend - Légende

- Sotrapmag Concession / Concession Sotrapmag
- Tanon Concession / Concession Tanon
- PER Application / Demande de PER
- Road / Piste

MINERALIZED ZONES - ZONES MINÉRALISÉES

- Grade contour >0.3 g/t Au / Contour iso valeur (3 m composite)

PRIORITY 1 DDH & RC 2015 - SONDAGE CAROTTÉ ET RC 2015 PRIORITÉ 1
Infill / Définition RC & DDH 2015

- Completed with assays / Complété avec analyses (35)
- Completed / Complété (4)
- Planned / Planifiée (61)

PREVIOUS DDH - SONDAGE CAROTTÉ ANTÉRIEUR

- 1996 - 2014 Guyanor & Sotrapmag

Échelle: 1:10 000

0 50 100 200 m

Système coordonnées: SFG95 UTM Zone 22N

S

SECTION 2700E

Montagne d'Or Gold Deposit
Paul Isnard, French Guiana

N



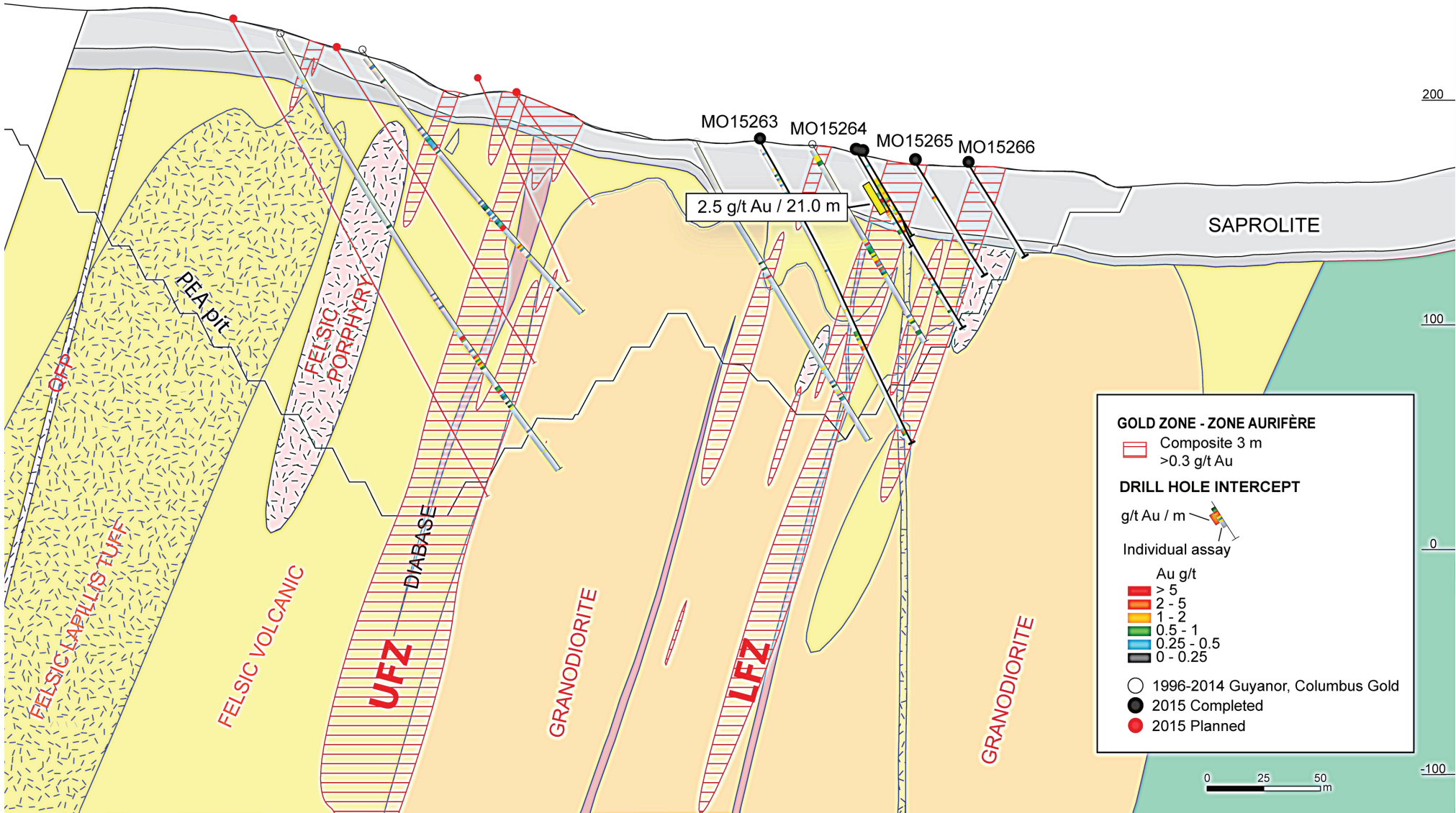
300

200

100

0

-100



S

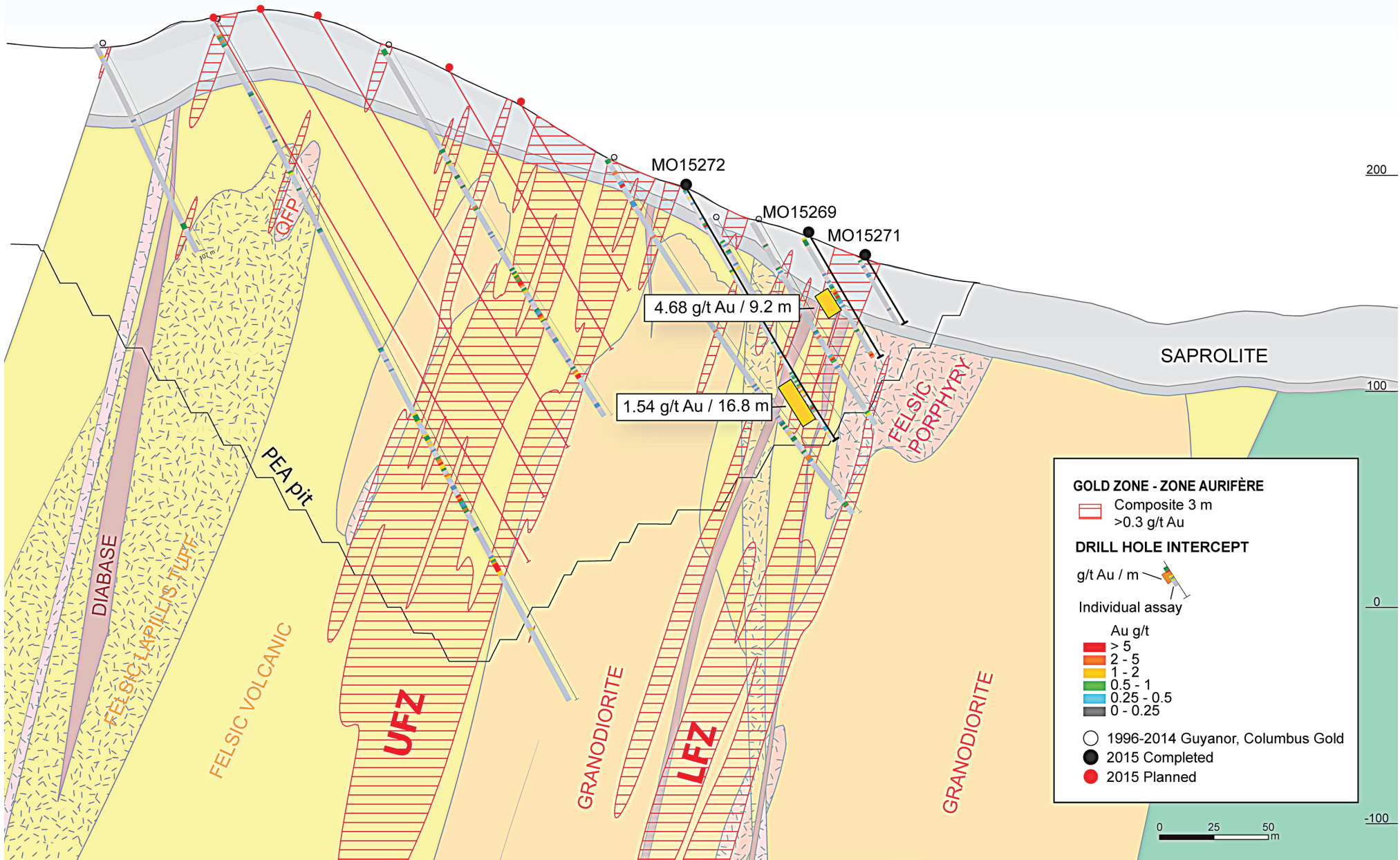
SECTION 2890E

Montagne d'Or Gold Deposit
Paul Isnard, French Guiana



N

300



GOLD ZONE - ZONE AURIFÈRE

Composite 3 m
>0.3 g/t Au

DRILL HOLE INTERCEPT

g/t Au / m

Individual assay

Au g/t

- > 5
- 2 - 5
- 1 - 2
- 0.5 - 1
- 0.25 - 0.5
- 0 - 0.25

○ 1996-2014 Guyanor, Columbus Gold
● 2015 Completed
● 2015 Planned