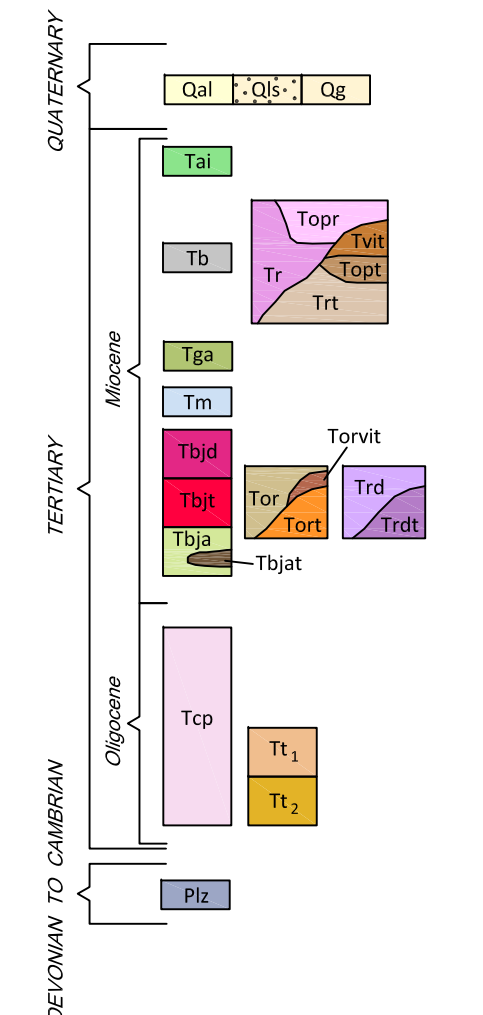
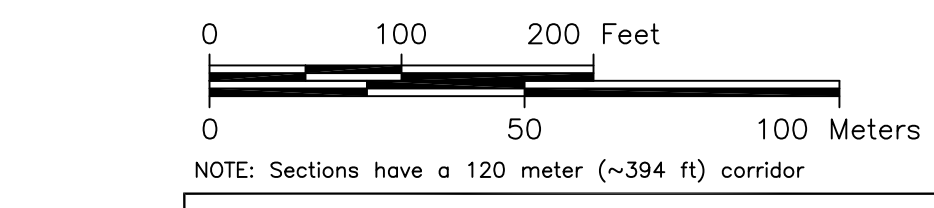
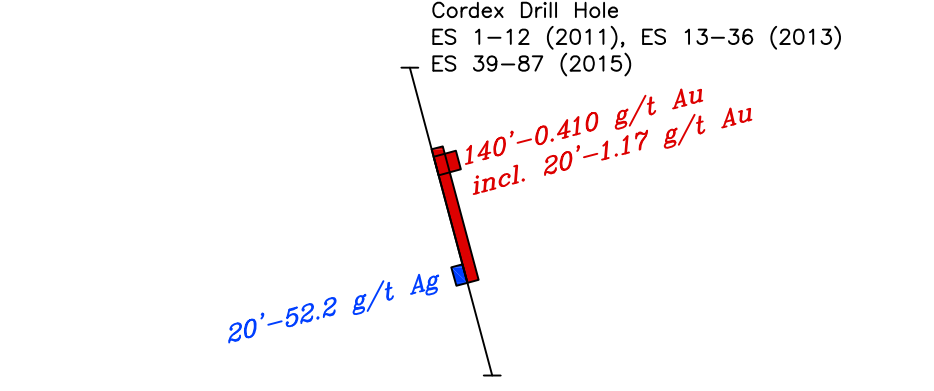


CORRELATION OF UNITS



- Quaternary**
- Qal Alluvium: stream-bed alluvium
- Qd Landslide debris
- Qg Alluvium: unconsolidated gravel and talus
- Tertiary**
- Tal Andesite: hornblende-andesite plug, dikes and flows; late Miocene.
- Tb Basalt: vesicular basalt flows; late Miocene. K-Ar date indicates an age of 7.2 Ma (late Miocene).
- Tr Rhyolite: flow-banded and devitrified rhyolite flow-domes. K-Ar date is 7.2 Ma (late Miocene). **Topr** Opalized rhyolite. **Tvit** Vitrophere at margins of rhyolite intrusives.
- Ttr Rhyolite: tuff, tuffaceous sedimentary tuff-breccia and volcanoclastic conglomerate with rhyolite clasts. Mostly ejecta from the rhyolite domes. **Toptr** Opalized tuff.
- Tga Gilbert Andesite: crystal-rich andesite-to-dacite flows, lahars and tuff-breccias. Two K-Ar dates indicate an age of 15 Ma (middle Miocene).
- Tm Sedimentary rocks of McLeans: pale yellow to light brown, platy sandstone and shale with abundant diatomite and "popcorn texture" clay beds. Hydrothermally altered locally, sometimes completely silicified. Consistent with freshwater lakebed sediments.
- Ttd Dacite: gray porphyritic dacite and coarse-grained porphyritic rhyodacite that intrudes the Blair Junction Andesite (Tbja). Phenocrysts of plagioclase, biotite, quartz and hornblende. Hydrothermally altered with small veins of quartz, clay and calcite. Early Miocene.
- Ttdt Dacite tuff: porphyritic dacite tuff and tuff breccia with clasts of porphyritic dacite. Ejecta from the dacite intrusive (Ttd). Early Miocene.
- Tbjd Blair Junction Rhyodacite: gray to reddish-brown dacite to rhyodacite intrusions, domes and minor flows. Phenocrysts of hornblende with minor plagioclase and quartz. Forms large columnar joints, brecciated in part with quartz veinlets and jarosite on some fractures. K-Ar date of 15.7 Ma.
- Tbjt Blair Junction Tuff: bleached white to light yellow non-welded rhyodacite tuff made up of ejecta from Blair Junction Rhyodacite (Tbjd).
- Tor Older rhyolite: flow-banded rhyolite and rhyolite breccia. K-Ar dates are 18.6 and 19.2 Ma (middle Miocene). **Toprv** Vitrophere at margins of older rhyolite intrusive.
- Toprt Older rhyolite tuff: sedimentary tuffs, tuff breccia and ejecta related to the older rhyolite flow-dome complex.
- Tbja Blair Junction Andesite: dark green-brown andesite to dacite flows, lahars and flow breccias. 20% phenocrysts of clinopyroxene, plagioclase and altered olivine (?). Propylitically altered, often with a platy texture. Intruded by rocks with a K-Ar age of 22.2 Ma.
- Tbjat Blair Junction Lacustrine Tuff: quartz-rich air-fall and lacustrine tuff and shale, interbedded with Blair Junction Andesite (Tbja). Often lightly silicified, with fractures across bedding planes.
- Devonian to Cambrian**
- Tpc Tuffs of Castle Peak Group: bleached, white, biotite-rich, devitrified and weakly-welded tuffs. K-Ar date is 24 Ma (Oligocene).
- Tt1 Tuff of Crow Springs: welded- to non-welded, crystal-poor tuff. K-Ar date is 26.7 Ma (late Oligocene)
- Tt2 Tuff of Cedar Mountain: welded, crystal-rich tuff. K-Ar date is 26.7 Ma (late Oligocene).
- Plz Paleozoic sedimentary rocks: includes the Permian Mina Formation and Devonian to Cambrian siliceous units with minor limestones.

Surface Sample in Au ppb: comma designates multiple samples taken at same location, Staggered values designate samples taken at separate locations but running along the same Northing

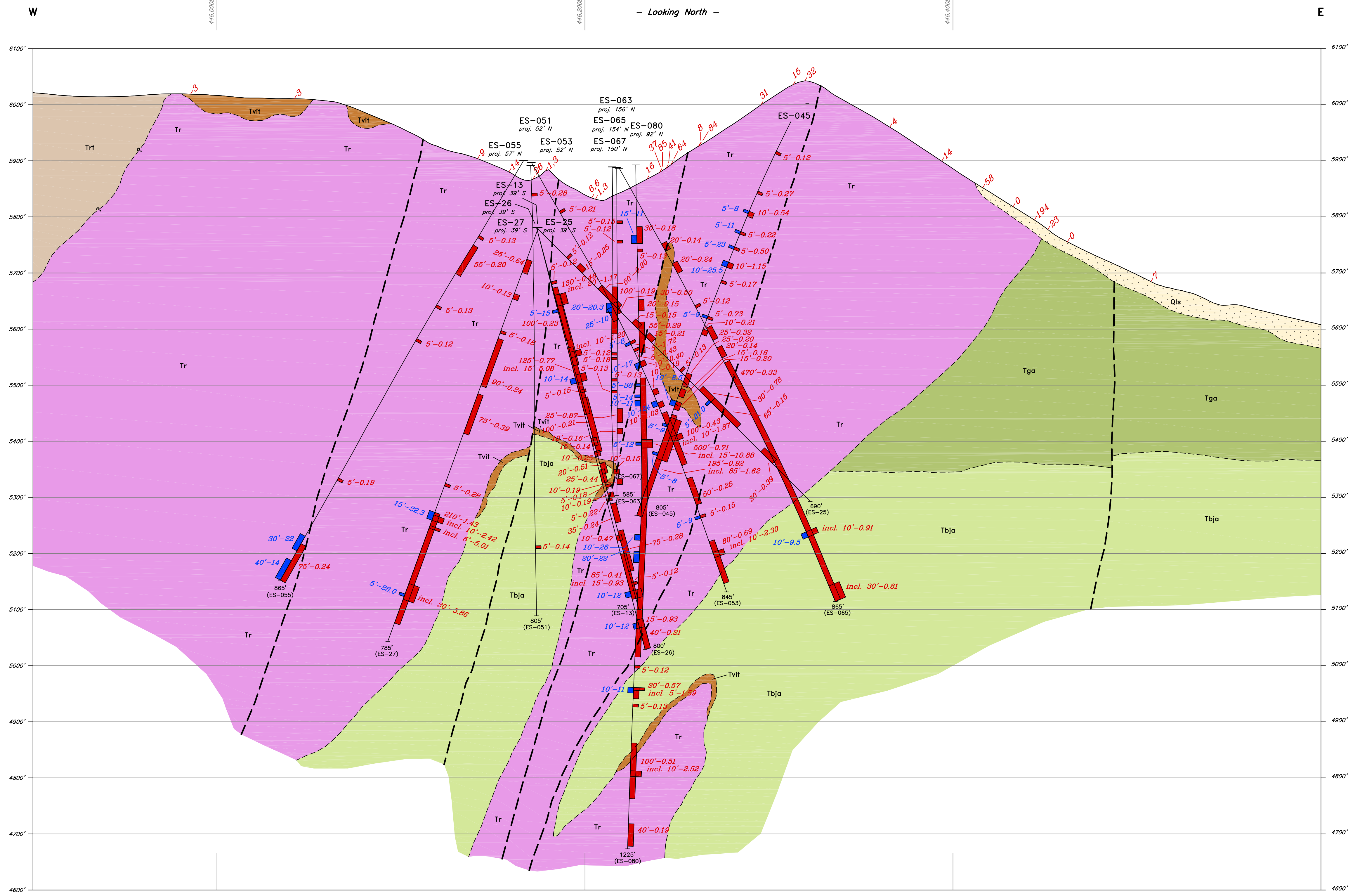


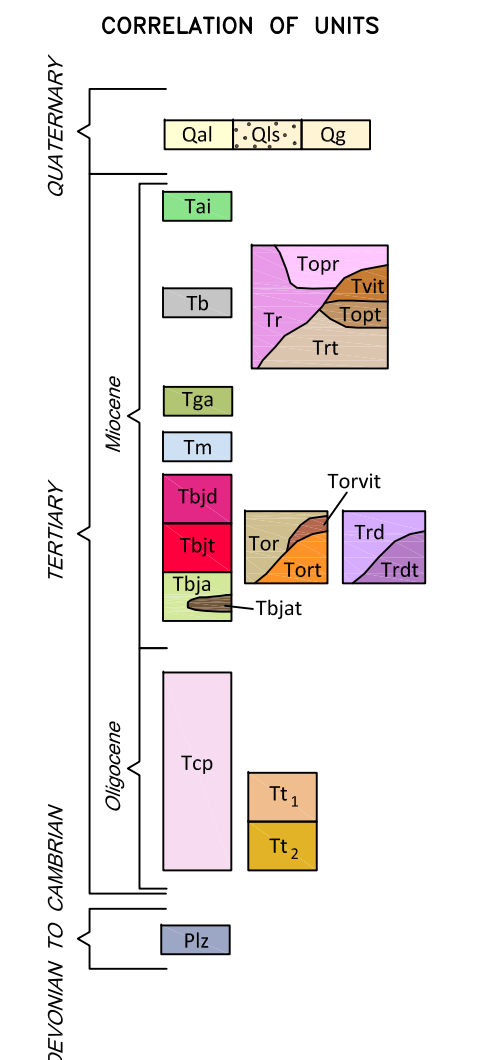
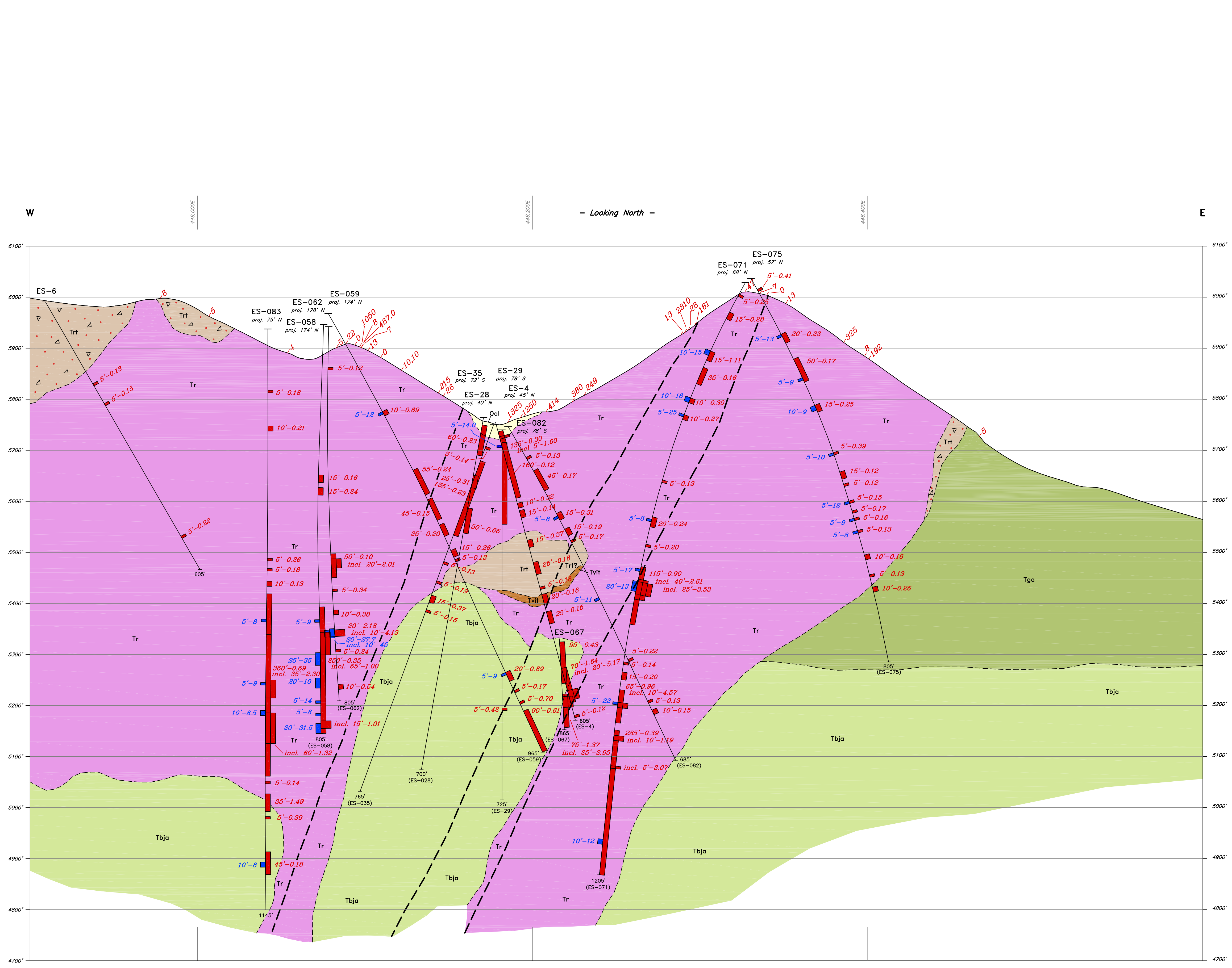
CORDEX EXPLORATION CO.

Eastside Project
 T4N-R39E, M.D.B.&M.
 Esmeralda County, Nevada

Section 8780N

Drawn By: J.A.T.
 Drawing: 255-ES-XS-2015-NAD83-120m_corridor.dwg
 Layout: XS-100sc-Geo
 Date: Sept. 19, 2015
 NOTE: Datum NAD83211
 Revised:





- Quaternary**
- Qal Alluvium: stream-bed alluvium
- Qlb Landslide debris
- Qg Alluvium: unconsolidated gravel and talus
- Tertiary**
- Taj Andesite: hornblende-andesite plug, dikes and flows; late Miocene.
- Tbl Basalt: vesicular basalt flows; late Miocene. K-Ar date indicates an age of 7.2 Ma (late Miocene).
- Tr Rhyolite: flow-banded and devitrified rhyolite flow-domes. K-Ar date is 7.2 Ma (late Miocene). Top: Opalized rhyolite. Trt: Vitrophere at margins of rhyolite intrusives.
- Trt Rhyolite: tuff, tuffaceous sedimentary tuff-breccia and volcanoclastic conglomerate with rhyolite clasts. Mostly ejecta from the rhyolite domes. Top: Opalized tuff.
- Tga Gilbert Andesite: crystal-rich andesite-to-dacite flows, lahars and tuff-breccias. Two K-Ar dates indicate an age of 15 Ma (middle Miocene).
- Tm Sedimentary rocks of McLeans: pale yellow to light brown, platy sandstone and shale with abundant diatomite and "popcorn texture" clay beds. Hydrothermally altered locally, sometimes completely silicified. Consistent with freshwater lakebed sediments.
- Trd Dacite: gray porphyritic dacite and coarse-grained porphyritic rhyodacite that intrudes the Blair Junction Andesite (Tbja). Phenocrysts of plagioclase, biotite, quartz and hornblende. Hydrothermally altered with small veins of quartz, clay and calcite. Early Miocene.
- Tnd Dacite tuff: porphyritic dacite tuff and tuff breccia with clasts of porphyritic dacite. Ejecta from the dacite intrusive (Trd). Early Miocene.
- Tbj Blair Junction Rhyodacite: gray to reddish-brown dacite to rhyodacite intrusions, domes and minor flows. Phenocrysts of hornblende with minor plagioclase and quartz. Forms large columnar joints, brecciated in part with quartz veinlets and jarosite on some fractures. K-Ar date of 15.7 Ma.
- Tbt Blair Junction Tuff: bleached white to light yellow non-welded rhyodacite tuff made up of ejecta from Blair Junction Rhyodacite (Tbj).
- Tor Older rhyolite: flow-banded rhyolite and rhyolite breccia. K-Ar dates are 18.6 and 19.2 Ma (middle Miocene). Top: Vitrophere at margins of older rhyolite intrusive.
- Tort Older rhyolite tuff: sedimentary tuffs, tuff breccia and ejecta related to the older rhyolite flow-dome complex.
- Tbja Blair Junction Andesite: dark green-brown andesite to dacite flows, lahars and flow breccias. 20% phenocrysts of clinopyroxene, plagioclase and altered olivine (?). Propylitically altered, often with a platy texture. Intruded by rocks with a K-Ar age of 22.2 Ma.
- Tbjt Blair Junction Lacustrine Tuff: quartz-rich air-fall and lacustrine tuff and shale, interbedded with Blair Junction Andesite (Tbja). Often lightly silicified, with fractures across bedding planes.
- Devonian to Cambrian**
- Tpc Tuffs of Castle Peak Group: bleached, white, biotite-rich, devitrified and weakly-welded tuffs. K-Ar date is 24 Ma (Oligocene).
- Tt1 Tuff of Crow Springs: welded- to non-welded, crystal-poor tuff. K-Ar date is 26.7 Ma (late Oligocene).
- Tt2 Tuff of Cedar Mountain: welded, crystal-rich tuff. K-Ar date is 26.7 Ma (late Oligocene).
- Plz Paleozoic sedimentary rocks: includes the Permian Mina Formation and Devonian to Cambrian siliceous units with minor limestones.
- Contact
- - - Fault
- ▲ Breccia
- Silicification

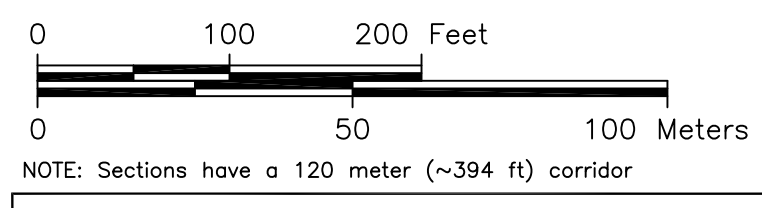
-1070.10795

Surface Sample in Au ppb: comma designates multiple samples taken at same location. Staggered values designate samples taken at separate locations but running along the same Northing

Cordex Drill Hole
 ES 1-12 (2011), ES 13-36 (2013)
 ES 39-87 (2015)

140'-0.410 g/t Au
 Incl. 20'-1.17 g/t Au

20'-52.2 g/t Ag



CORDEX EXPLORATION CO.

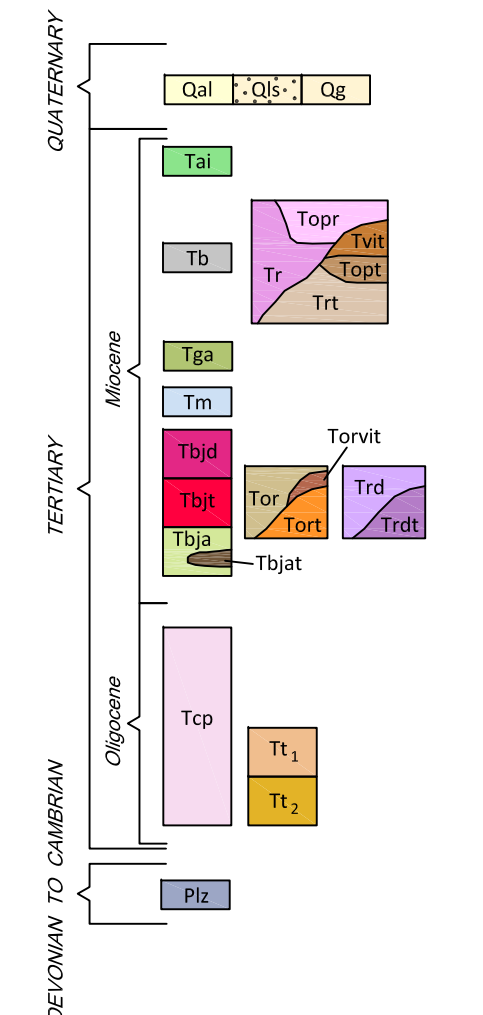
Eastside Project

T4N-R39E, M.D.B.&M.
Esmeralda County, Nevada

Section 8900N

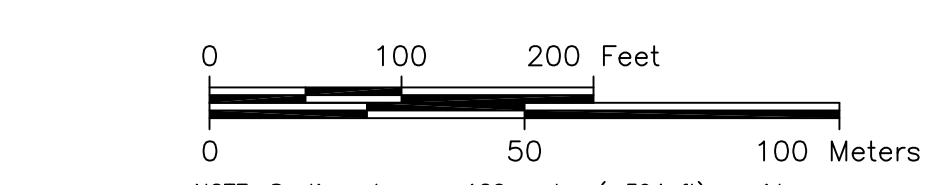
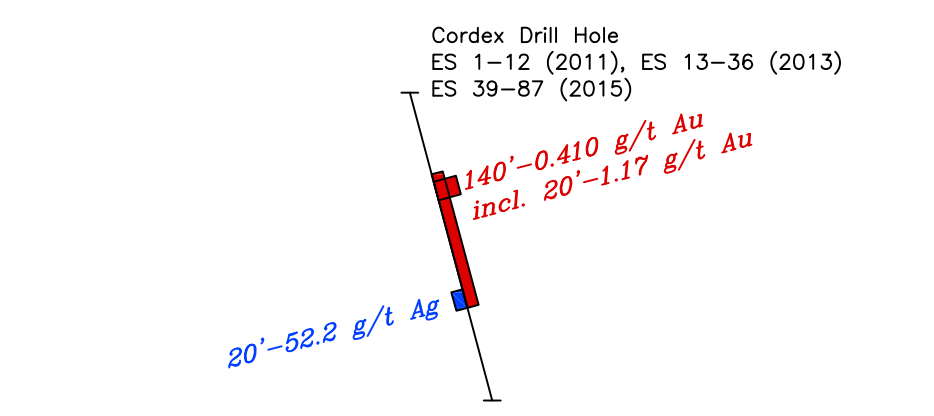
Drawn By: J.A.T.
 Drawing: 255-ES-XS-2015-NAD83-120m_corridor.dwg
 Layout: XS-100sc-Geo
 Date: Sept. 19, 2015
 NOTE: Datum NAD83211
 Revised:

CORRELATION OF UNITS



- Quaternary**
 - Qal Alluvium: stream-bed alluvium
 - Qlb Landslide debris
 - Qg Alluvium: unconsolidated gravel and talus
- Tertiary**
 - Tal Andesite: hornblende-andesite plug, dikes and flows; late Miocene.
 - Tbl Basalt: vesicular basalt flows; late Miocene. K-Ar date indicates an age of 7.2 Ma (late Miocene).
 - Tr Rhyolite: flow-banded and devitrified rhyolite flow-domes. K-Ar date is 7.2 Ma (late Miocene). Topr Opalized rhyolite. Torvit Vitrophyre at margins of rhyolite intrusions.
 - Tga Rhyolite: tuff, tuffaceous sedimentary tuff-breccia and volcanoclastic conglomerate with rhyolite clasts. Mostly ejecta from the rhyolite domes. Topr Opalized tuff.
 - Tm Gilbert Andesite: crystal-rich andesite-to-dacite flows, lahars and tuff-breccias. Two K-Ar dates indicate an age of 15 Ma (middle Miocene).
 - Tbd Dacite: gray porphyritic dacite and coarse-grained porphyritic rhyodacite that intrudes the Blair Junction Andesite (Tbja). Phenocrysts of plagioclase, biotite, quartz and hornblende. Hydrothermally altered with small veins of quartz, clay and calcite. Early Miocene.
 - Tbjd Blair Junction Rhyodacite: gray to reddish-brown dacite to rhyodacite intrusions, domes and minor flows. Phenocrysts of hornblende with minor plagioclase and quartz. Forms large columnar joints, brecciated in part with quartz veinlets and jarosite on some fractures. K-Ar date of 15.7 Ma.
 - Tbjl Blair Junction Tuff: bleached white to light yellow non-welded rhyodacite tuff made up of ejecta from Blair Junction Rhyodacite (Tbjd).
 - Tor Older rhyolite: flow-banded rhyolite and rhyolite breccia. K-Ar dates are 18.6 and 19.2 Ma (middle Miocene). Topr Vitrophyre at margins of older rhyolite intrusion.
 - Tort Older rhyolite tuff: sedimentary tuffs, tuff breccia and ejecta related to the older rhyolite flow-dome complex.
 - Tbja Blair Junction Andesite: dark green-brown andesite to dacite flows, lahars and flow breccias. 20% phenocrysts of clinopyroxene, plagioclase and altered olivine (?). Propylitically altered, often with a platy texture. Intruded by rocks with a K-Ar age of 22.2 Ma.
 - Tbjt Blair Junction Lacustrine Tuff: quartz-rich air-fall and lacustrine tuff and shale, interbedded with Blair Junction Andesite (Tbja). Often lightly silicified, with fractures across bedding planes.
 - Tcp Tufts of Castle Peak Group: bleached, white, biotite-rich, devitrified and weakly-welded tuffs. K-Ar date is 24 Ma (Oligocene).
 - Tt1 Tuff of Crow Springs: welded- to non-welded, crystal-poor tuff. K-Ar date is 26.7 Ma (late Oligocene).
 - Tt2 Tuff of Cedar Mountain: welded, crystal-rich tuff. K-Ar date is 26.7 Ma (late Oligocene).
- Devonian to Cambrian**
 - Plz Paleozoic sedimentary rocks: includes the Permian Mina Formation and Devonian to Cambrian siliceous units with minor limestones.

Surface Sample in Au ppb: comma designates multiple samples taken at same location, Staggered values designate samples taken at separate locations but running along the same Northing

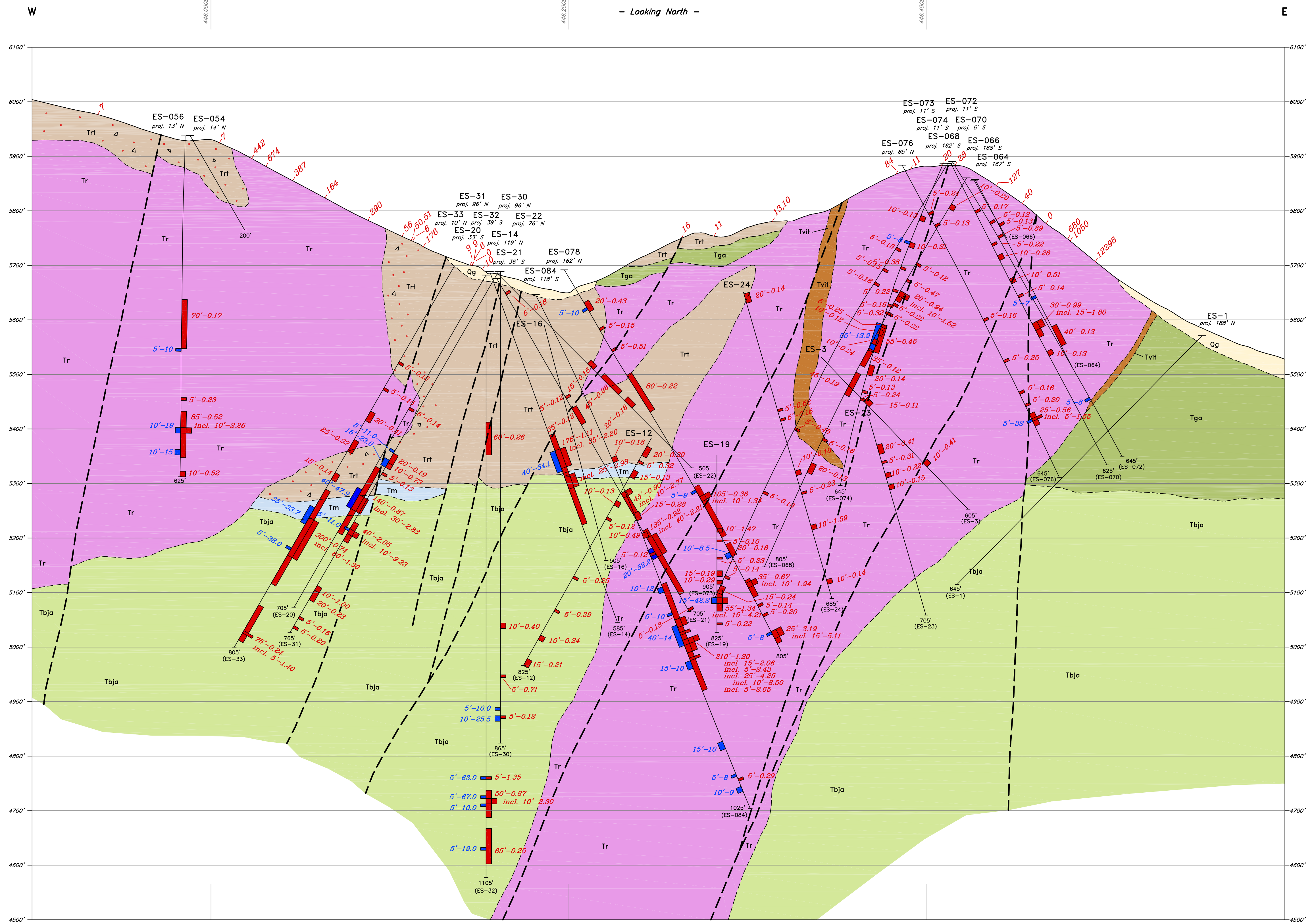


NOTE: Sections have a 120 meter (~394 ft) corridor

CORDEX EXPLORATION CO.
Eastside Project
 T4N-R39E, M.D.B.&M.
 Esmeralda County, Nevada

Section 9020N

Drawn By: J.A.T.
 Drawing: 255-ES-XS-2015-NAD83-120m_corridor.dwg
 Layout: XS-100sc-Geo
 Date: Sept. 21, 2015
 NOTE: Datum NAD83211
 Revised:



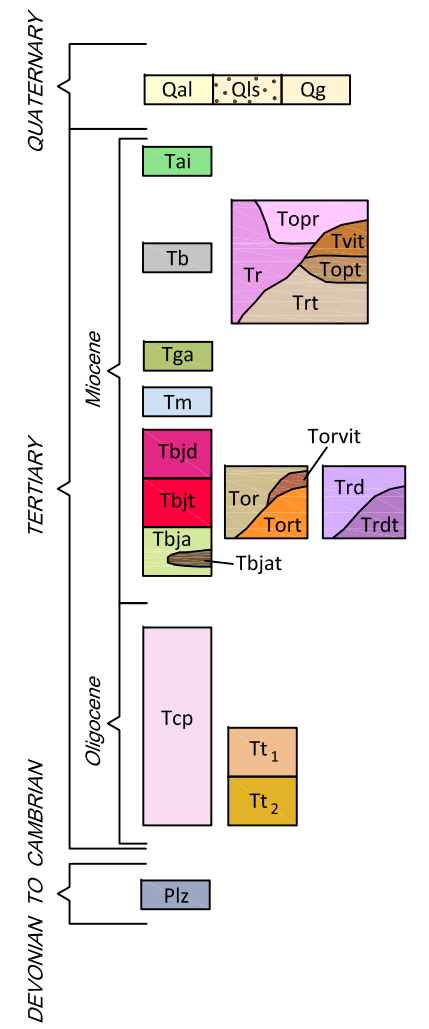
W

Looking North

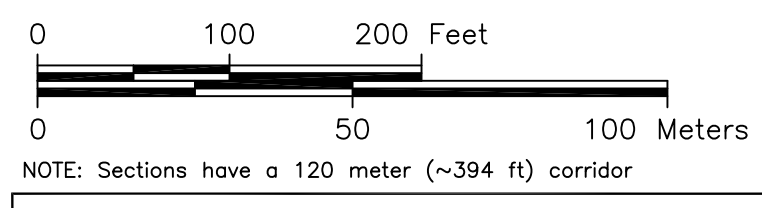
E

Looking North

CORRELATION OF UNITS



- Quaternary**
 - Tertiary**
 - Devonian to Cambrian**
 - Contact
 - - - Fault
 - ▲ Breccia
 - Silicification
- Surface Sample in Au ppb: comma designates multiple samples taken at same location, Staggered values designate samples taken at separate locations but running along the same Northing
- 1070.10795
- Cordex Drill Hole
ES 1-12 (2011), ES 13-36 (2013)
ES 39-87 (2015)
- 140'-0.410 g/t Au
incl. 20'-1.17 g/t Au
- 20'-52.2 g/t Ag



NOTE: Sections have a 120 meter (~394 ft) corridor

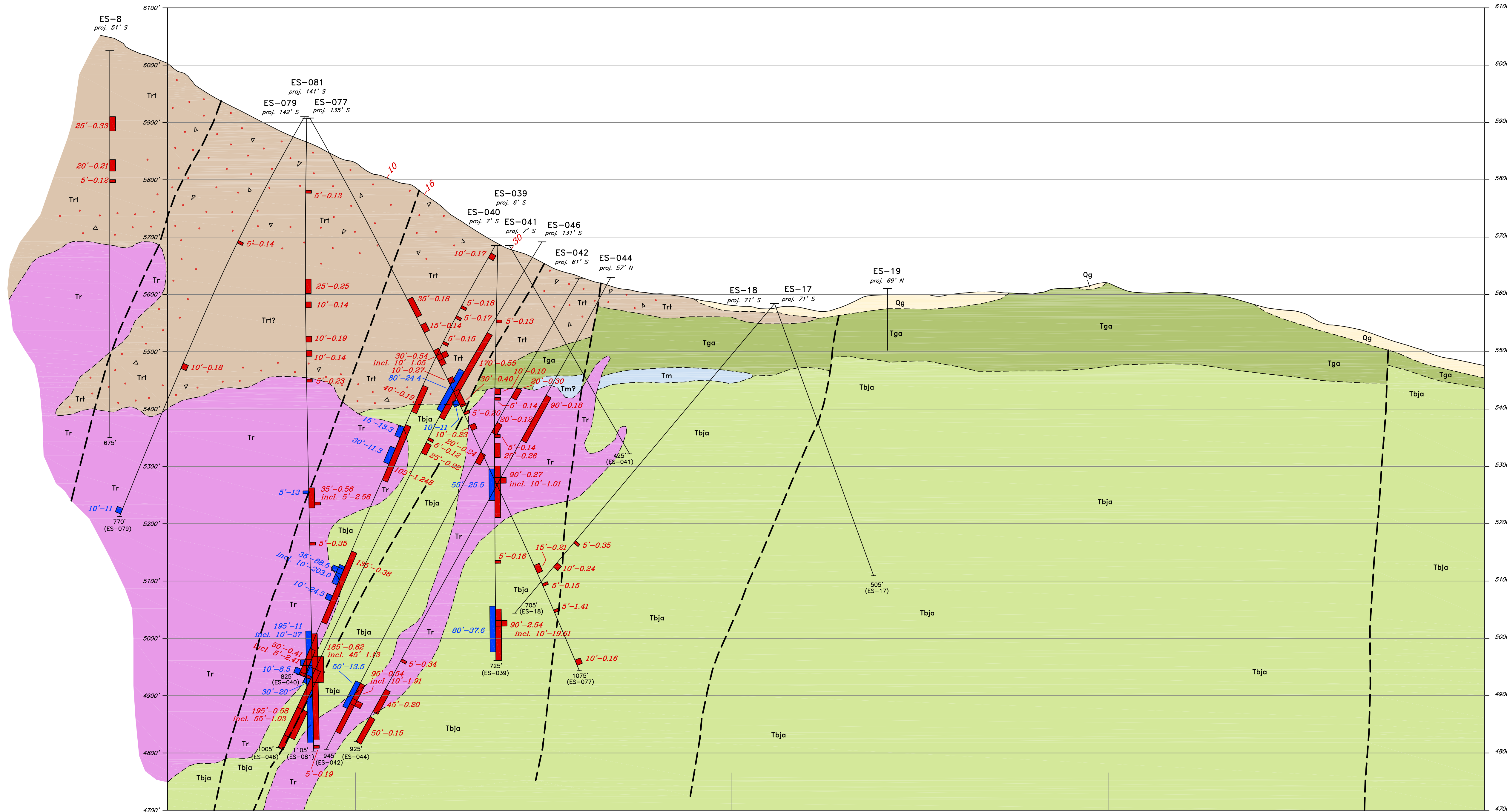
CORDEX EXPLORATION CO.

Eastside Project
T4N-R39E, M.D.B.&M.
Esmeralda County, Nevada

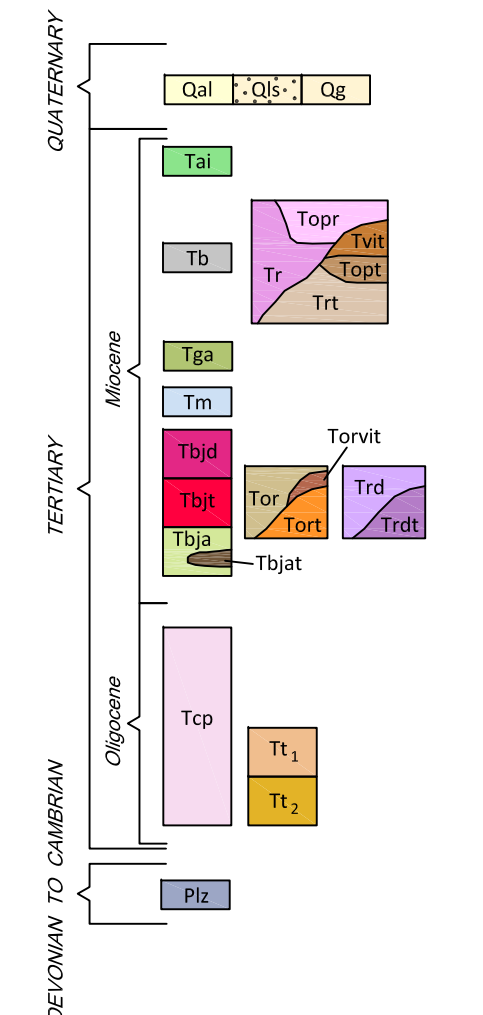
Section 9180N

Drawn By: J.A.T.
Drawing: 255-ES-XS-2015-NAD83-120m_corridor.dwg
Layout: XS-100sc-Geo
NOTE: Datum NAD83211

Date: Sept. 19, 2015
Revised:

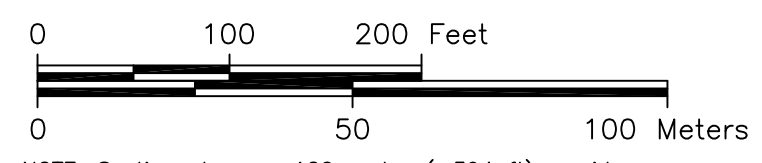
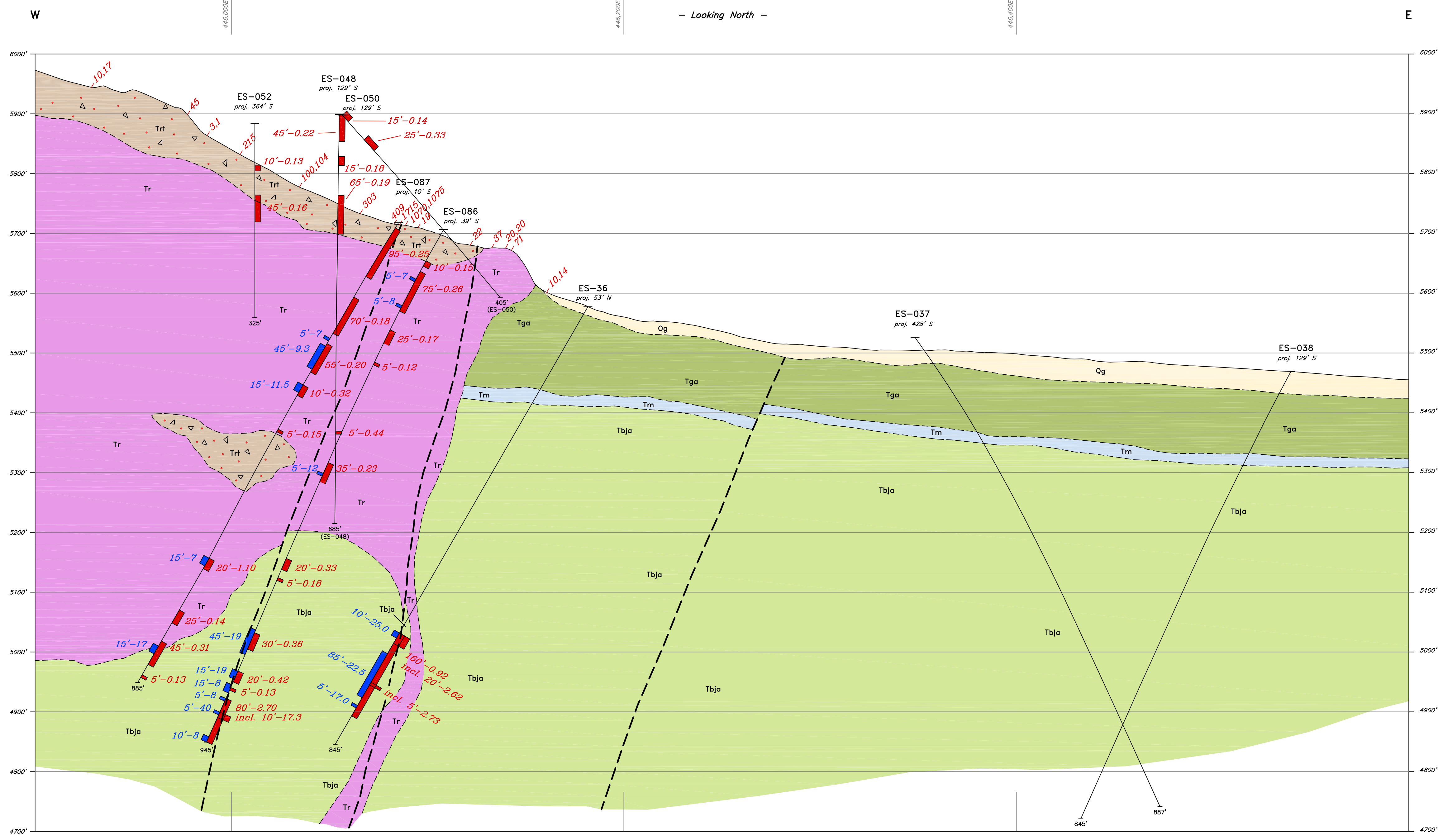
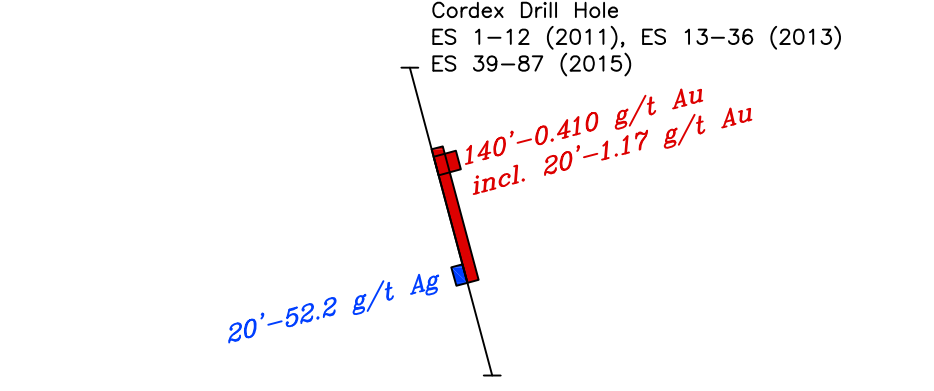


CORRELATION OF UNITS



- Quaternary**
- Qal Alluvium: stream-bed alluvium
- Qlb Landslide debris
- Qg Alluvium: unconsolidated gravel and talus
- Tertiary**
- Tal Andesite: hornblende-andesite plug, dikes and flows; late Miocene.
- Tb Basalt: vesicular basalt flows; late Miocene. K-Ar date indicates an age of 7.2 Ma (late Miocene).
- Tr Rhyolite: flow-banded and devitrified rhyolite flow-domes. K-Ar date is 7.2 Ma (late Miocene). Topr Opalized rhyolite. Tvt Vitrophere at margins of rhyolite intrusives.
- Trt Rhyolite: tuff, tuffaceous sedimentary tuff-breccia and volcanoclastic conglomerate with rhyolite clasts. Mostly ejecta from the rhyolite domes. Topr Opalized tuff.
- Tga Gilbert Andesite: crystal-rich andesite-to-dacite flows, lahars and tuff-breccias. Two K-Ar dates indicate an age of 15 Ma (middle Miocene).
- Tm Sedimentary rocks of McLeans: pale yellow to light brown, platy sandstone and shale with abundant diatomite and "popcorn texture" clay beds. Hydrothermally altered locally, sometimes completely silicified. Consistent with freshwater lakebed sediments.
- Tbd Dacite: gray porphyritic dacite and coarse-grained porphyritic rhyodacite that intrudes the Blair Junction Andesite (Tbja). Phenocrysts of plagioclase, biotite, quartz and hornblende. Hydrothermally altered with small veins of quartz, clay and calcite. Early Miocene.
- Tbjd Dacite tuff: porphyritic dacite tuff and tuff breccia with clasts of porphyritic dacite. Ejecta from the dacite intrusive (Trd). Early Miocene.
- Tbjt Blair Junction Rhyodacite: gray to reddish-brown dacite to rhyodacite intrusions, domes and minor flows. Phenocrysts of hornblende with minor plagioclase and quartz. Forms large columnar joints, brecciated in part with quartz veinlets and jarosite on some fractures. K-Ar date of 15.7 Ma.
- Tbj Blair Junction Tuff: bleached white to light yellow non-welded rhyodacite tuff made up of ejecta from Blair Junction Rhyodacite (Tbjd).
- Tor Older rhyolite: flow-banded rhyolite and rhyolite breccia. K-Ar dates are 18.6 and 19.2 Ma (middle Miocene). Tvt Vitrophere at margins of older rhyolite intrusive.
- Tort Older rhyolite tuff: sedimentary tuffs, tuff breccia and ejecta related to the older rhyolite flow-dome complex.
- Tbja Blair Junction Andesite: dark green-brown andesite to dacite flows, lahars and flow breccias. 20% phenocrysts of clinopyroxene, plagioclase and altered olivine (?). Propylitically altered, often with a platy texture. Intruded by rocks with a K-Ar age of 22.2 Ma.
- Tbjat Blair Junction Lacustrine Tuff: quartz-rich air-fall and lacustrine tuff and shale, interbedded with Blair Junction Andesite (Tbja). Often lightly silicified, with fractures across bedding planes.
- Tcp Tufts of Castle Peak Group: bleached, white, biotite-rich, devitrified and weakly-welded tuffs. K-Ar date is 24 Ma (Oligocene).
- Tc1 Tuff of Crow Springs: welded- to non-welded, crystal-poor tuff. K-Ar date is 26.7 Ma (late Oligocene)
- Tc2 Tuff of Cedar Mountain: welded, crystal-rich tuff. K-Ar date is 26.7 Ma (late Oligocene).
- Devonian to Cambrian**
- Plz Paleozoic sedimentary rocks: includes the Permian Mina Formation and Devonian to Cambrian siliceous units with minor limestones.

Surface Sample in Au ppb: comma designates multiple samples taken at same location. Staggered values designate samples taken at separate locations but running along the same Northing



NOTE: Sections have a 120 meter (~394 ft) corridor

CORDEX EXPLORATION CO.

Eastside Project
T4N-R39E, M.D.B.&M.
Esmeralda County, Nevada

Section 9340N

Drawn By: J.A.T.
Drawing: 255-ES-XS-2015-NAD83-120m_corridor.dwg
Layout: XS-100sc-Geo
Date: Sept. 19, 2015
NOTE: Datum NAD83211