



Columbus Gold
CORPORATION

Distinguished Mine Finders



2011 Nevada Drilling Plans

CGT: TSX-V
CBGDF: OTCBB

This presentation contains forward-looking information and statements, as defined by law including without limitation Canadian securities laws and the "safe harbor" provisions of the US Private Securities Litigation Reform Act of 1995 ("forward-looking statements"), regarding geological interpretations, potential timing and content of exploration programs, receipt of permits or property titles, joint venture agreements, financings, and similar topics. Generally, forward-looking statements can be identified by the use of forward-looking terminology such as "plans", "expects" or "does not expect", "is expected", "budget", "scheduled", "estimates", "forecasts", "intends", "anticipates" or "does not anticipate", or "believes", or variations of such words and phrases or state that certain actions, events or results "may", "could", "would", "might" or "will be taken", "occur" or "be achieved".

Forward-looking statements are subject to known and unknown risks, uncertainties and other factors that may cause the actual results, level of activity, performance or achievements of Columbus to be materially different from those expressed or implied by such forward-looking statements. Because forward-looking statements refer to events and conditions that have not yet taken place, they involve inherent risks and uncertainties, and reliance should not be placed on such statements. Some of the risks, uncertainties, and other factors that may cause actual results to be materially different from those expressed or implied by the forward-looking statements may include without limitation the ability to obtain regulatory, shareholder, and TSX Venture Exchange approvals; the ability to satisfy conditions precedent; the ability to obtain applicable exemptions from prospectus and registration requirements in connection with the issuance of securities of Columbus; the ability to complete milestones; the ability to obtain qualified workers, financing, permits, approvals, and equipment; changes in the market; decisions respecting whether or not to pursue the transactions made by Columbus or the other parties with which Columbus is interacting; non-performance by contractual counterparties; and general business and economic conditions. Forward-looking statements are also based on a number of assumptions that may prove to be incorrect, which may include without limitation assumptions about: general business and economic conditions; that applicable approvals are obtained; that conditions precedent are satisfied; that exemptions are available and employable by Columbus; that milestones are completed; that qualified workers, financing, permits, approvals, and equipment are obtained; that market conditions continue; that decisions of Columbus and third parties are made that are in line with such forward-looking statements; that contractual counterparties perform their obligations as required; and that Columbus is able to locate sufficient financing for ongoing operations.

The foregoing lists of factors and assumptions is not exhaustive, and Columbus undertakes no obligation to update any of the foregoing except as required by law. Most of the forward-looking statements contained in this presentation are collected from other disclosure sources of Columbus, including without limitation news releases, information circulars, and other regulatory and TSX Venture Exchange filings. Columbus recommends and expects that you will review the applicable forward-looking statement disclaimer language in such original sources for additional information on the forward-looking statements contained in this presentation.

Andy Wallace is a Certified Professional Geologist (CPG) and is the Qualified Person under National Instrument 43-101 for the projects discussed in this presentation; however, the figures presented herein, in particular historical figures and resources, may not be NI 43-101 compliant. Such figures should not be relied upon and Columbus does not treat them as current.



Project	Drill Holes Planned *	Meters (Feet) *
Weepah	15	2,392 (7,895)
Eastside	20	3,048 (10,000)
Petes Summit	12	1,500 (5,000)
Browns Canyon	15	2,300 (7,500)
Summit **	3	1,980 (6,500)
Guild **	21	3,600 (11,810)
Overland Pass **	24	6,100 (20,000)
Stevens Basin **	20	4,000 (13,100)
Golden Mile **	6	900 (3,000)
Utah Clipper/Crestview **	1	700 (2,300)
White Horse Flats **	11	2,000 (6,560)
Four Metals (Arizona) **	4	3,050 (10,000)
TOTALS	152	31,570 (103,665)

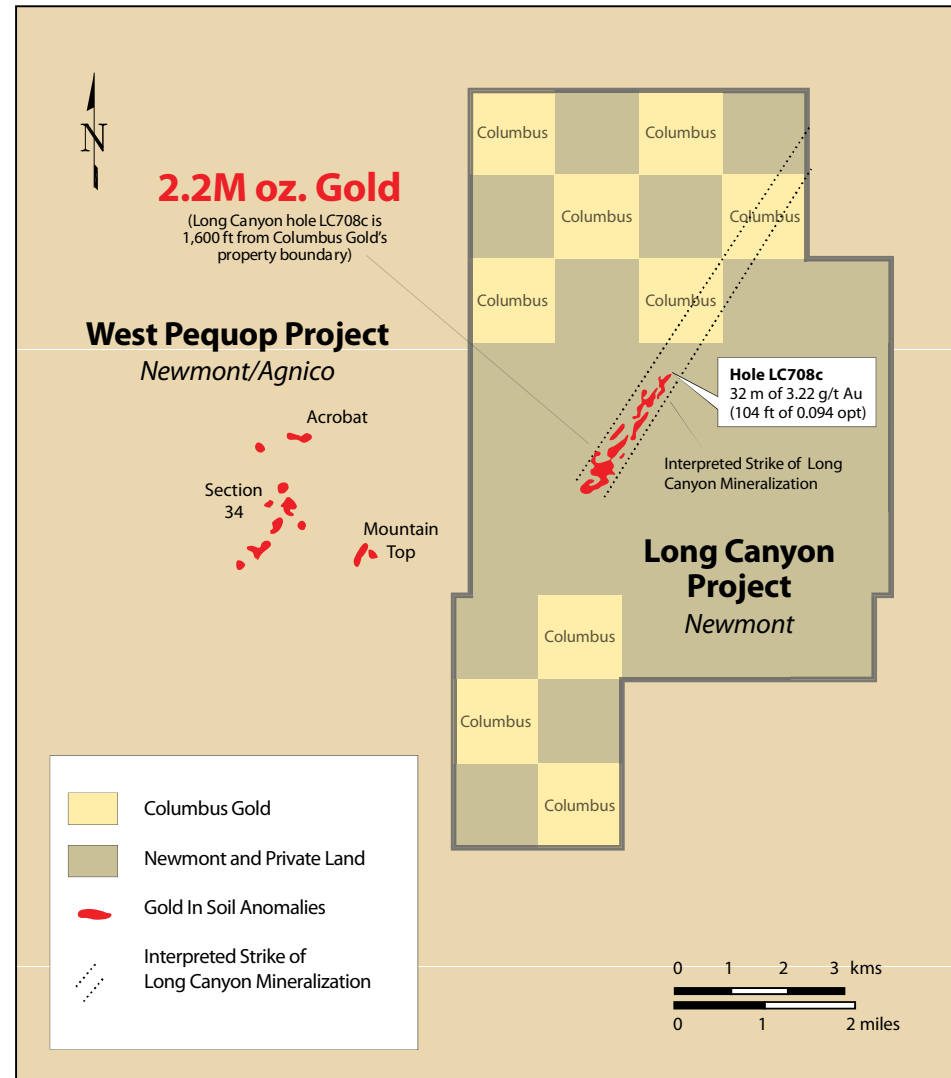
* All drilling plans are tentative

** To be drilled by a Columbus Gold JV partner

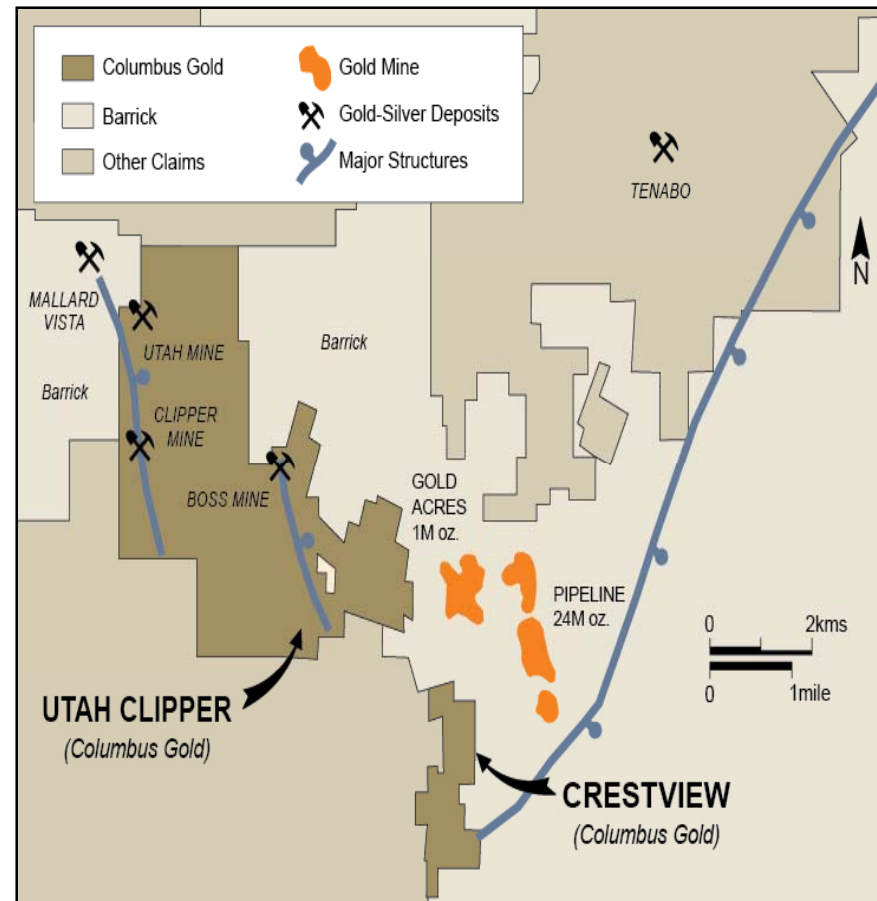
- Along strike of Long Canyon Carlin type multi-million ounce gold deposit.
- Newmont announced acquisition of Fronteer and Long Canyon in Feb 2011 for C\$2.3 billion.
- Agnico-Eagle is earning an initial 51% interest in Summit by spending US\$3 million.
- Agnico-Eagle plans to drill 6,500 ft (1,980 m) at Summit in mid-2011.
- Hole LC708c at Long Canyon drilled only approx. 1,600 ft (488 m) away from Summit intersected 32 m of 3.22 g/t (105 ft of 0.094 opt) gold.

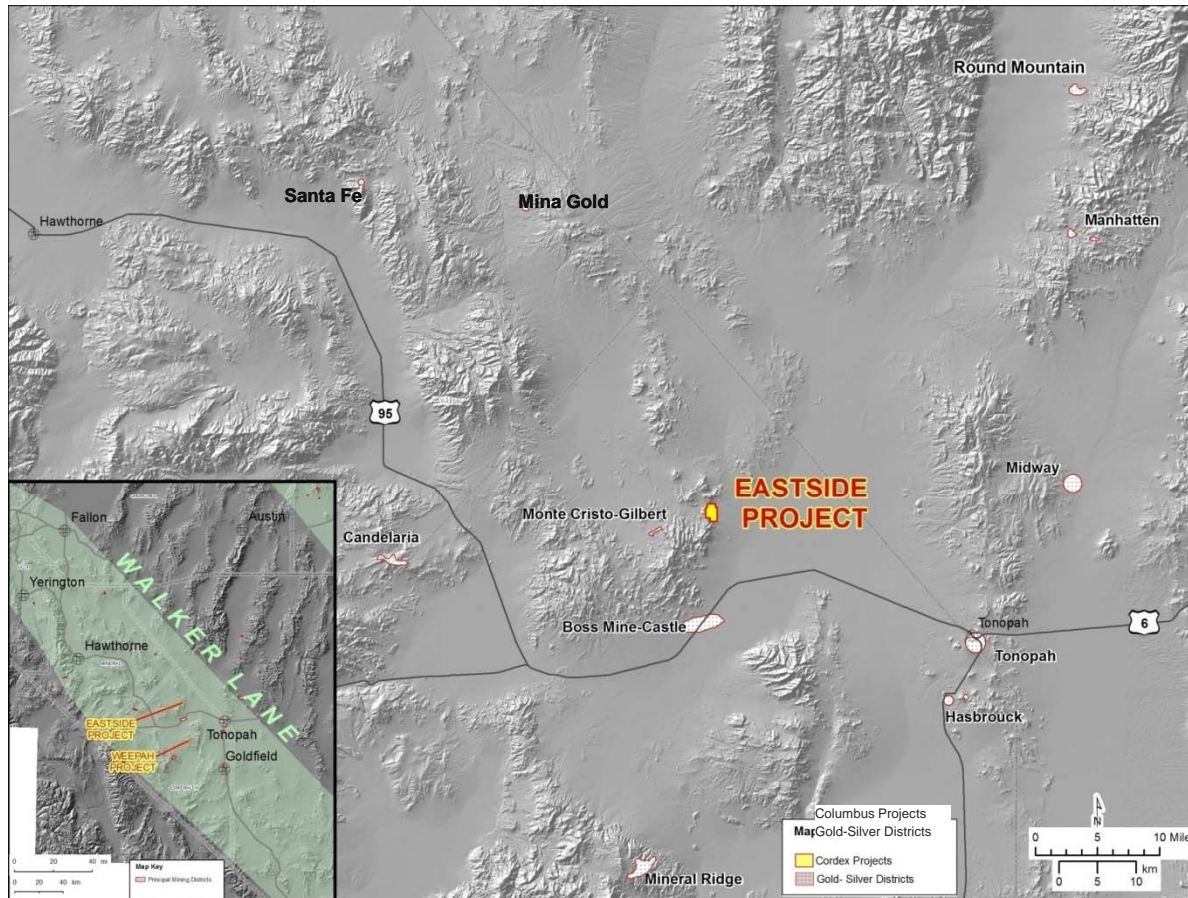


Long Canyon Discovery



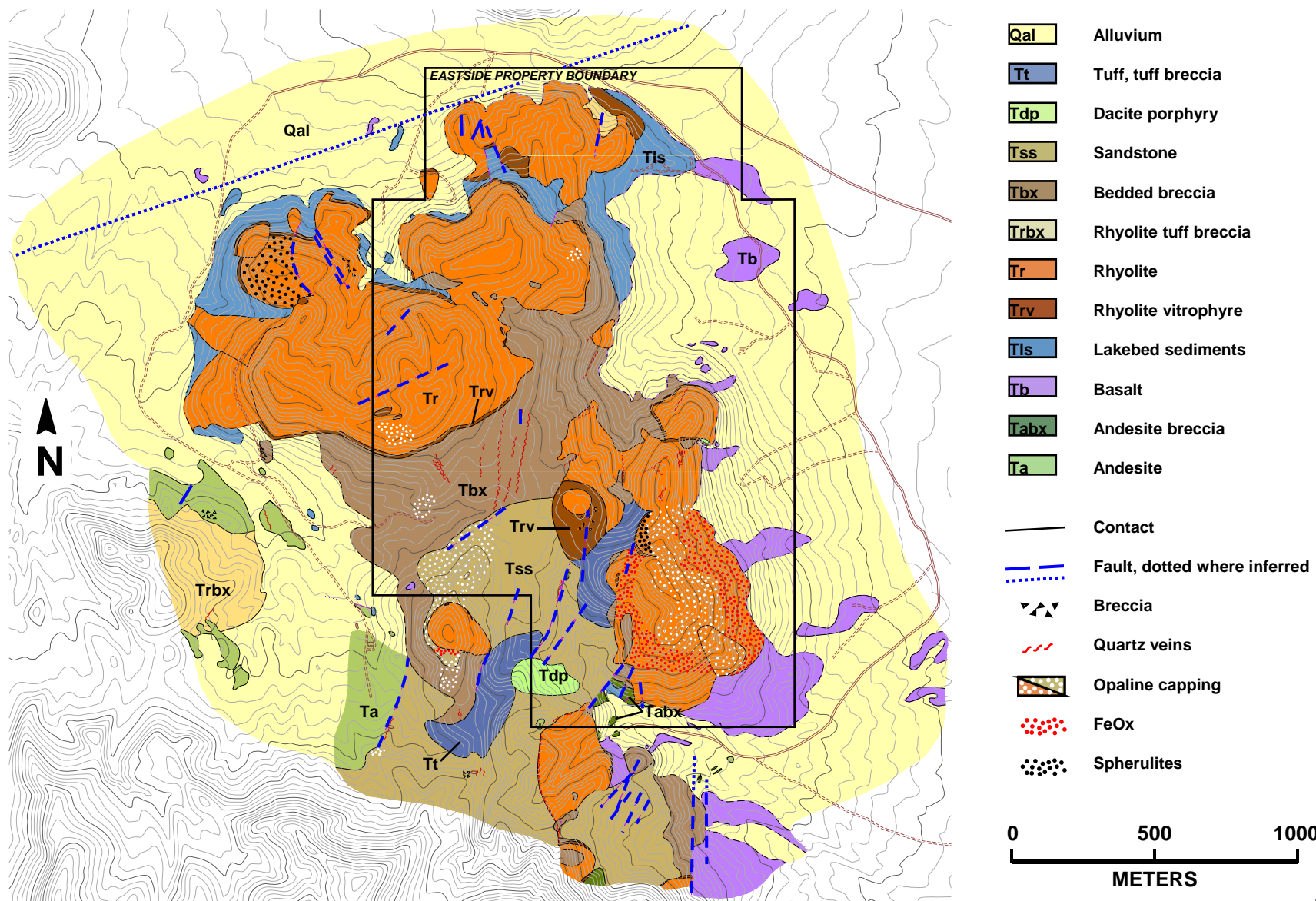
- Utah Clipper & Crestview directly adjacent to Pipeline-Gold Acres pits.
- Pipeline production and reserves exceed 25M oz. gold.
- Historic production from the Utah, Clipper & Boss mines.
- Limited historical exploration.
- JV partner Navaho Gold planning up to 2,300 ft (700m) of drilling.

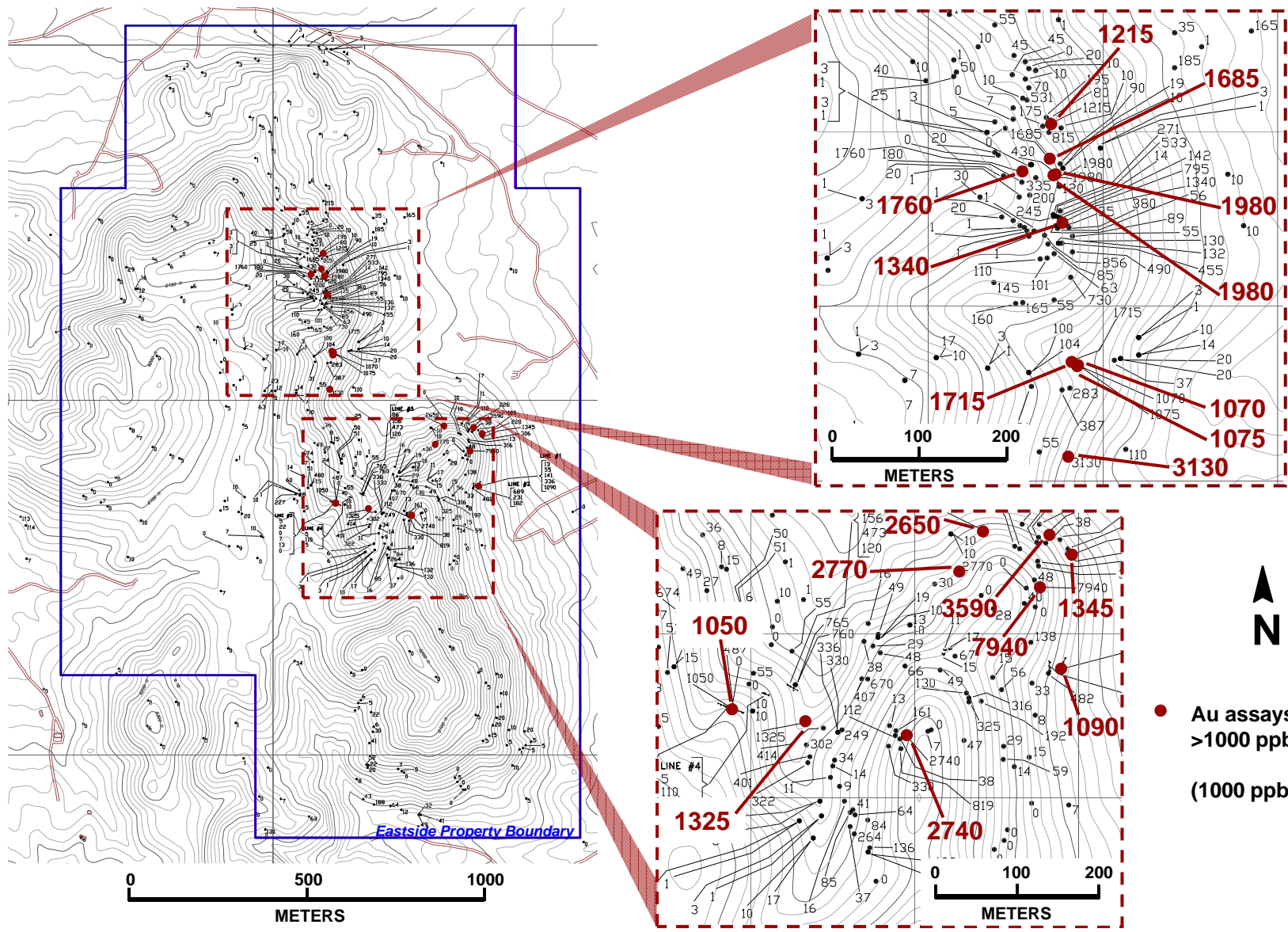


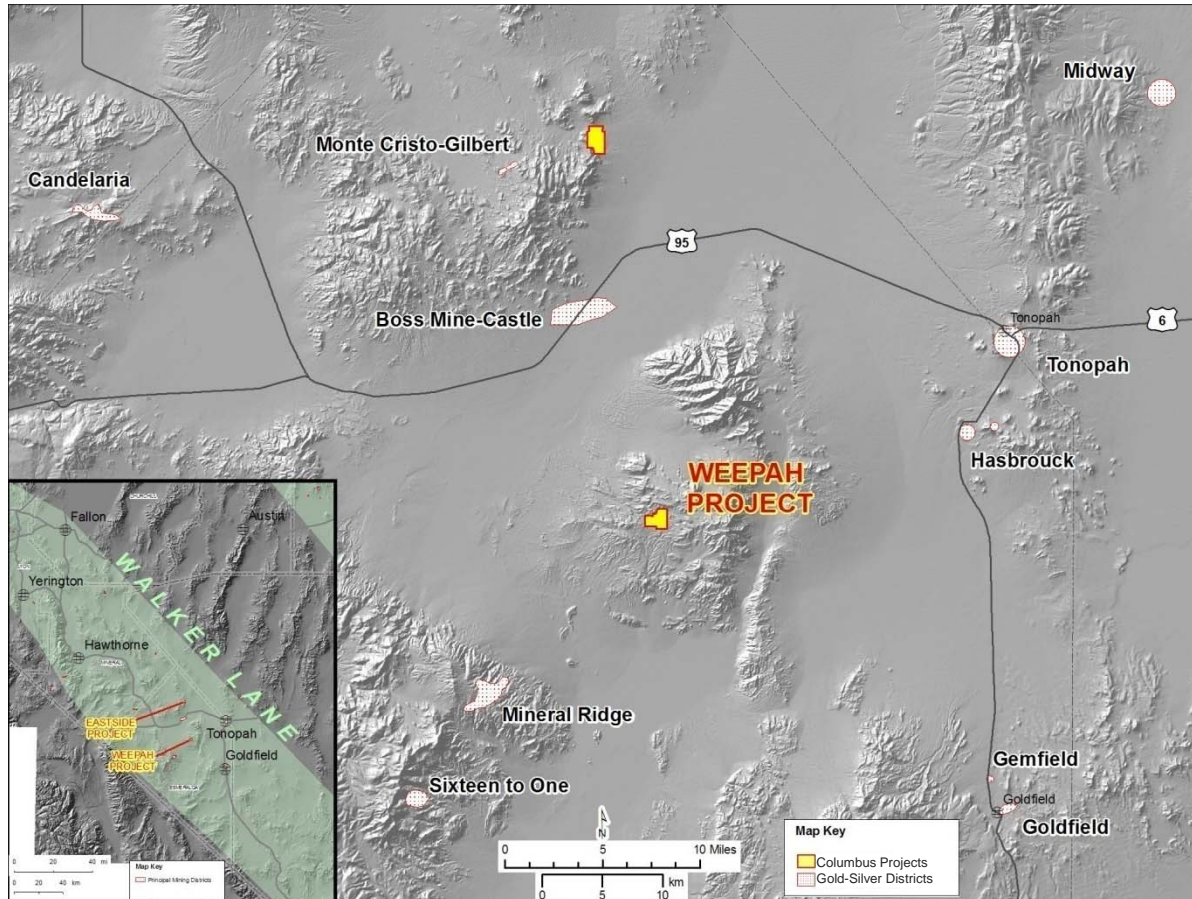


- Outcrop sampling (530 samples) of a zone of silicified breccia over 900 m (3,000 ft) of strike length yielded gold values ranging from trace values up to 7.95 g/t (0.23 opt).
- Most of the samples exceeded 0.15 g/t (0.004 opt) with several contiguous areas running from 0.8 to 3.5 g/t (0.02 to 0.10 opt).
- Only three historic drill holes on the property, but none tested the mineralization identified in the recent sampling.
- Drilling has commenced consisting of a 20 RC hole 10,000 ft (3,048m) program.

Note: Where assay values are indicated as "up to", the range is from "nil" up to the value indicated.







- Property extends from historical mining, where the most recent production was from an open pit.
- New sampling of sparse outcrop through thin gravel cover east and southeast of the historical camp yielded values up to 10.29 g/t (0.30 opt) gold over 3.6 m (12 ft), and 17.14 g/t (0.50 opt) gold over 1.8 m (6 ft).
- The favorable geology extends to the south for 1,200-1,500 m (4000-5,000 ft) under very thin gravel cover.
- Phase I drilling completed and consisted of 15 holes in approx. 7,895 ft (2,392m).

Note: Where assay values are indicated as "up to", the range is from "nil" up to the value indicated.

Quaternary alluvium Qal

Precambrian phyllite & marble Zpl

Precambrian limestone & marble Zls

Precambrian phyllite Zp

Precambrian quartzite Zq

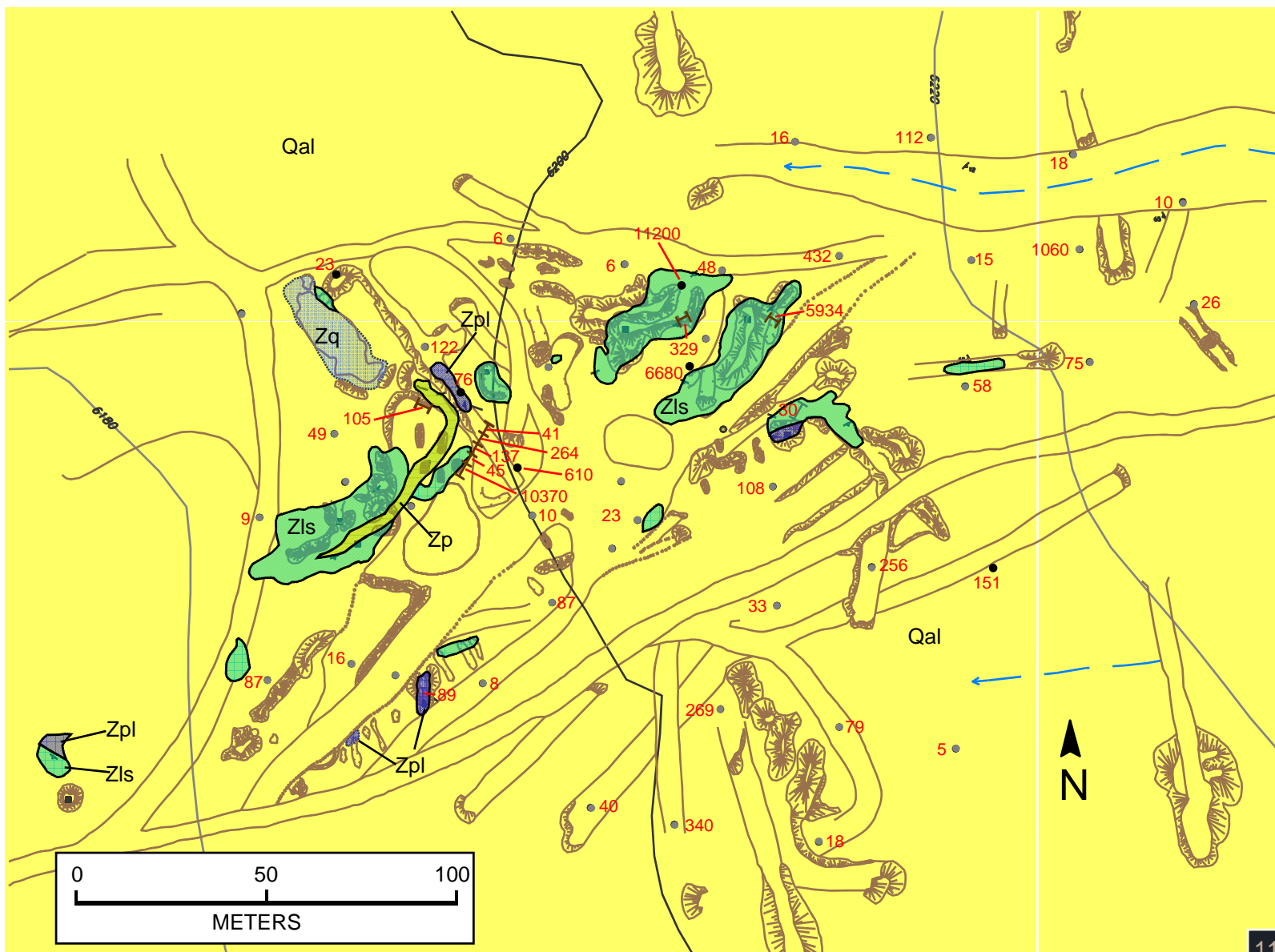
Rock chip sample

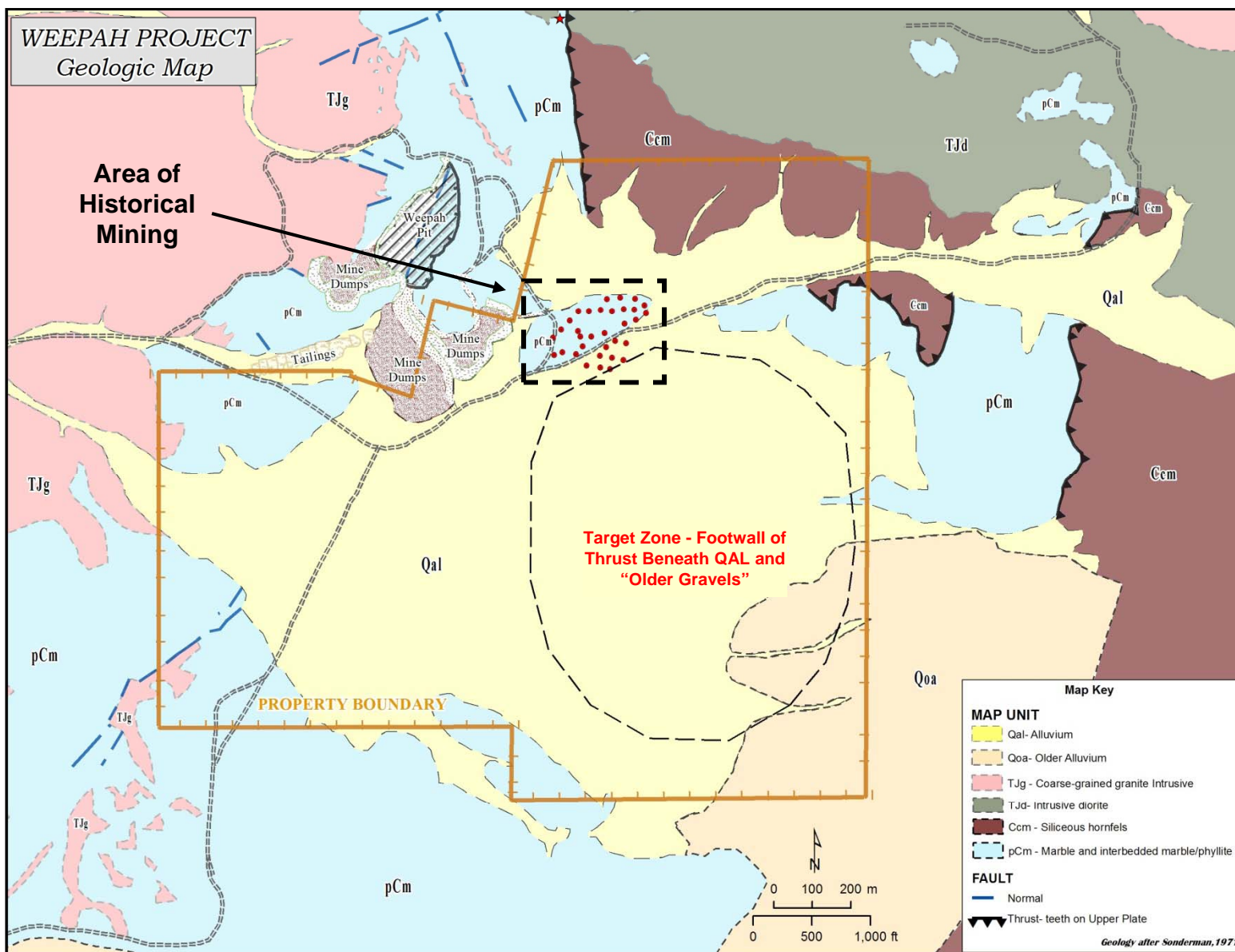
Drill hole cuttings pile sample

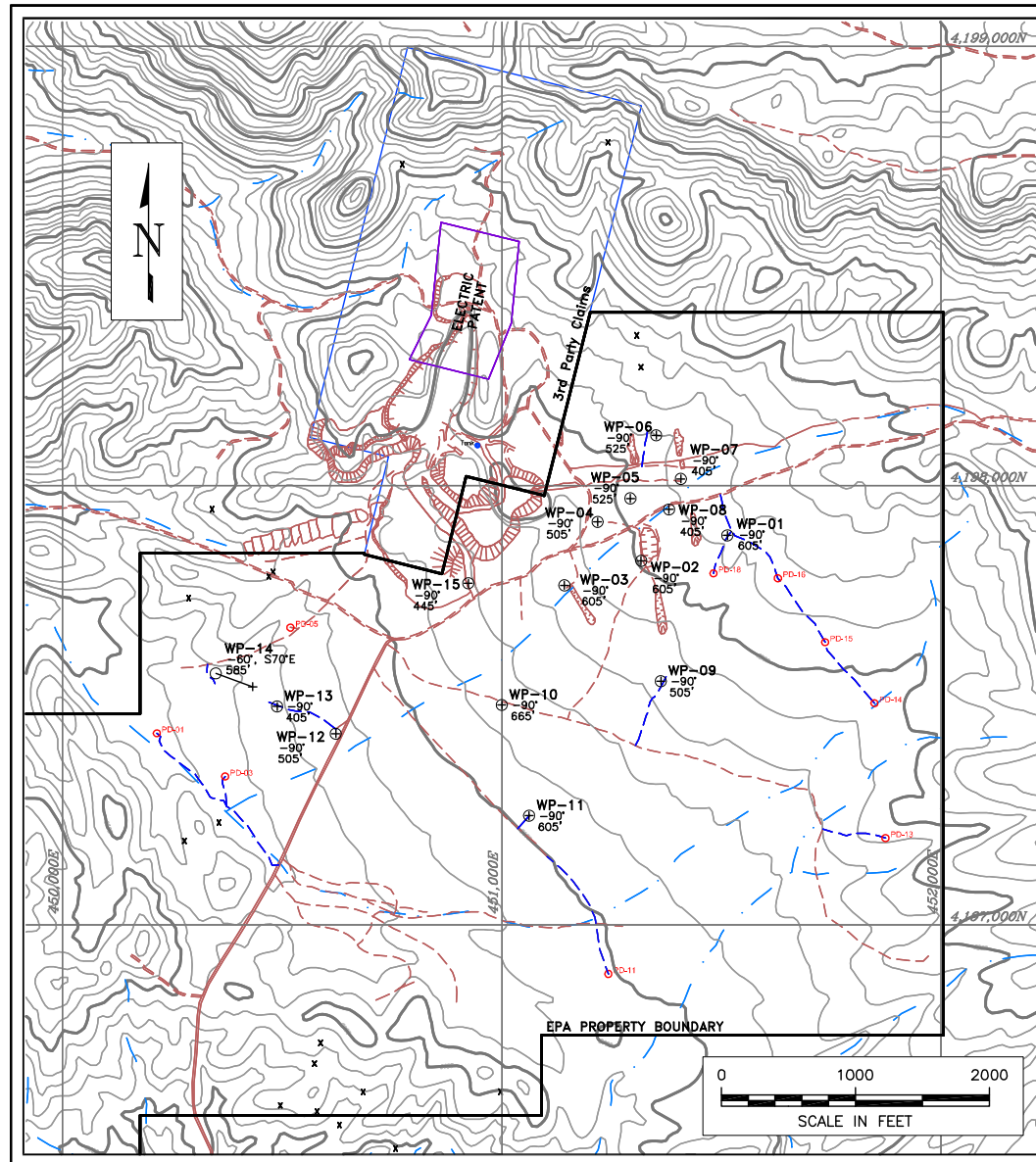
Au ppb 89

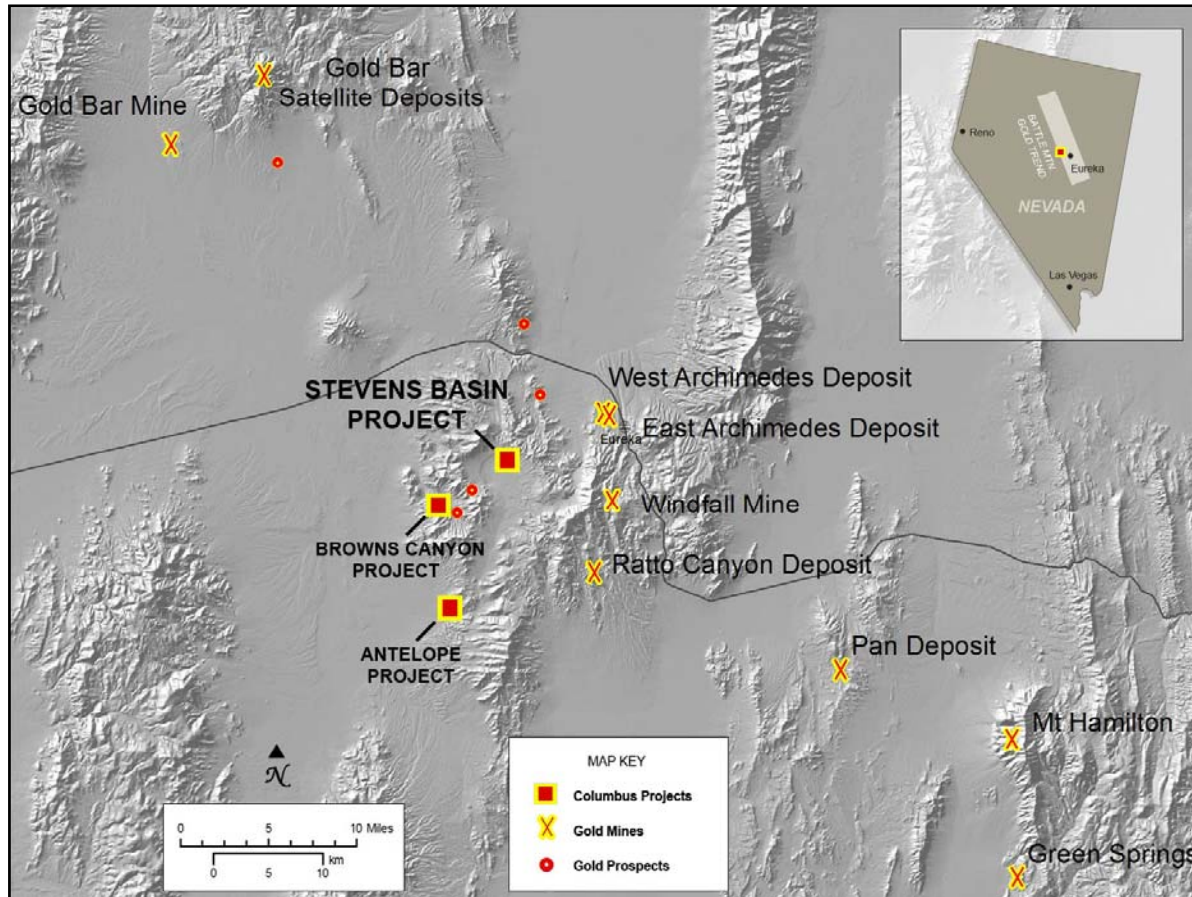
Historical workings ✶

(1000 ppb=1 g/t)

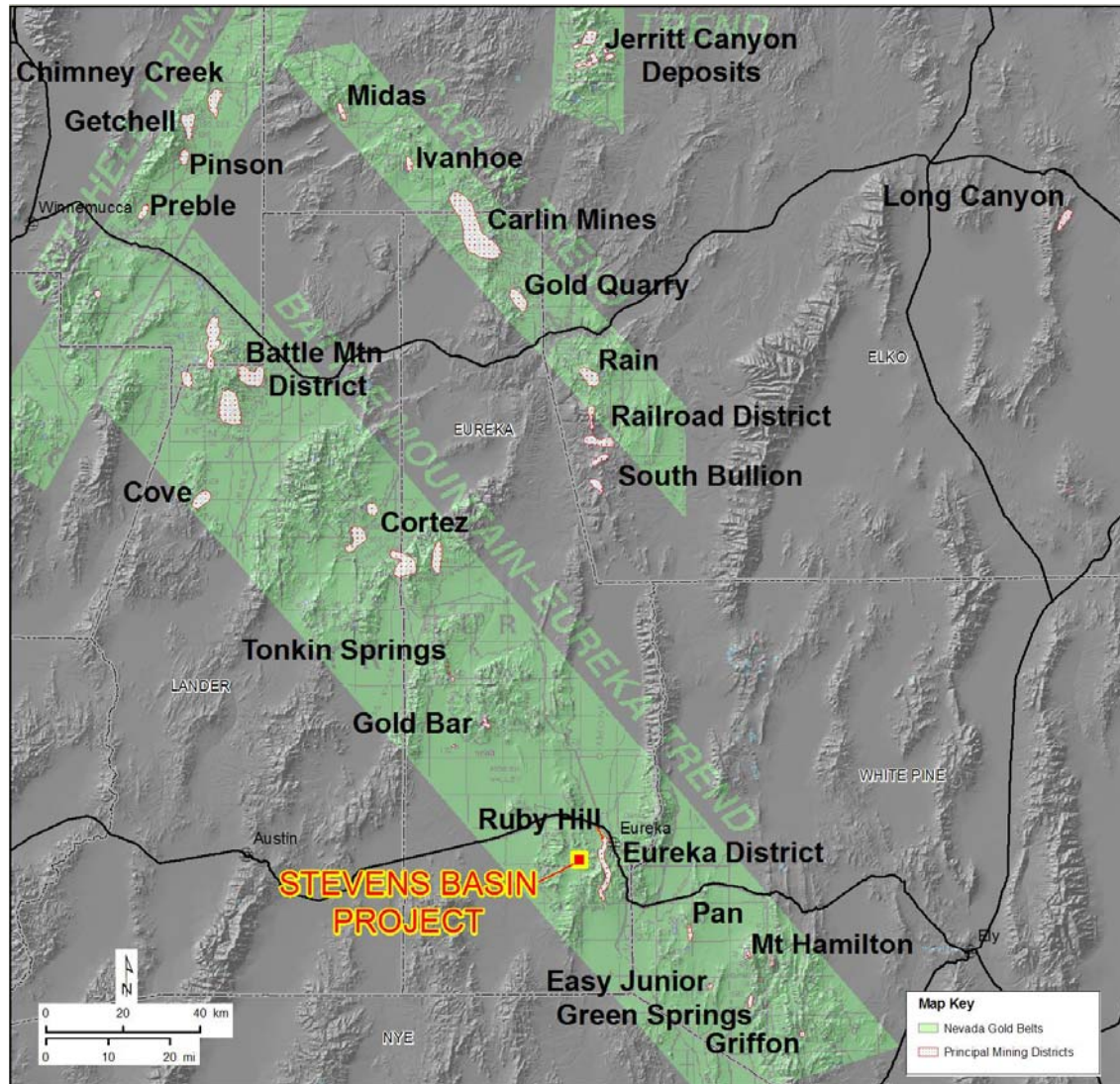


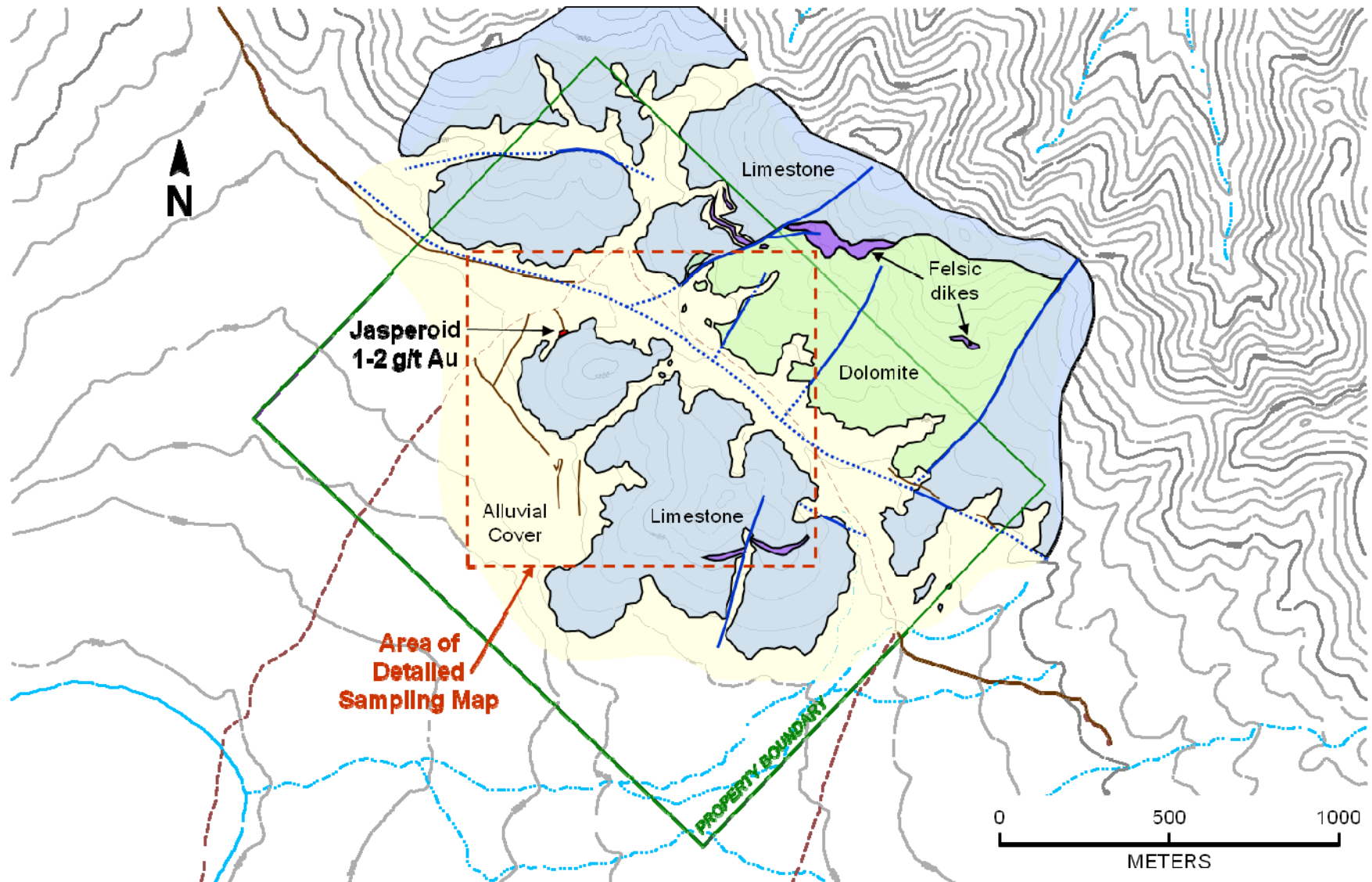


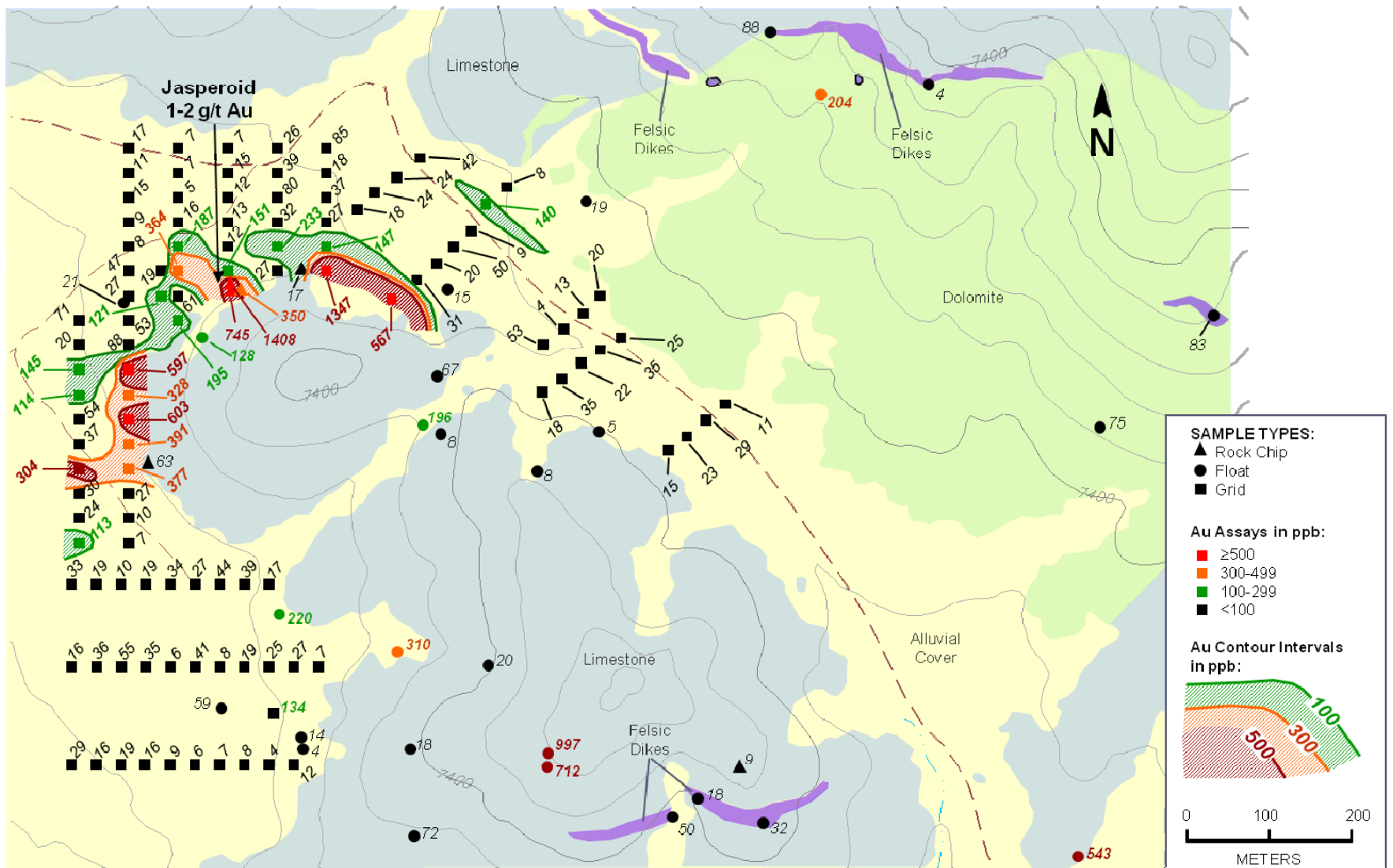


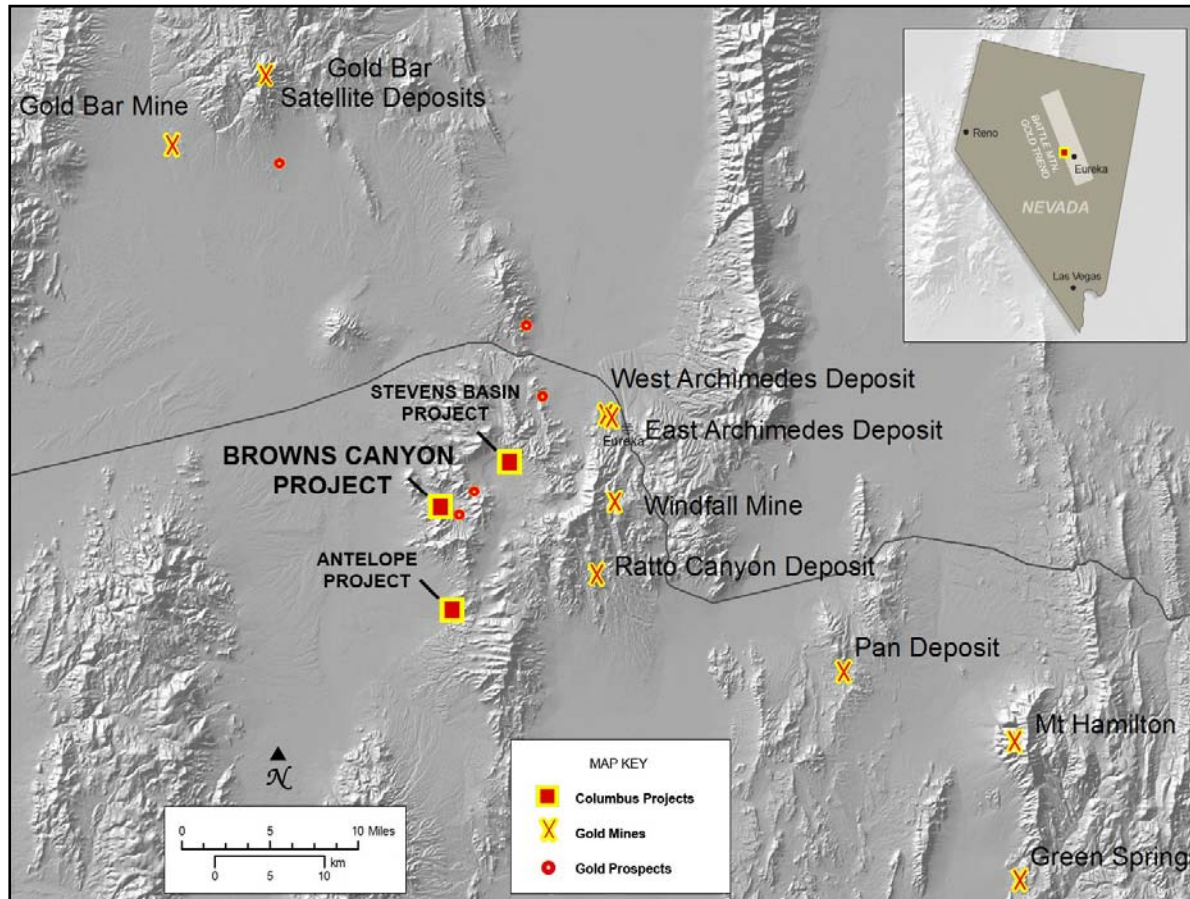


- A 9 by 30 m (30 by 100 ft) jasperoid assaying 1-2 g/t gold in 12 samples passes under large area of shallow gravel cover.
- Sampling in the covered area yielded a gold anomaly (100 ppb to 2505 ppb; numerous exceeding 500 ppb) measuring 760 m (2,500 ft) by 30-90 m (100-300 ft); zone still open in several areas.
- The gold anomaly coincides with significant anomalies of arsenic, antimony and mercury.
- JV partner Navaho Gold planning a phase I drill program commencing in May 2011. 40 holes have been permitted and phase I will include approximately 6,550 ft (2,000m) followed by a phase II program of another 6,550 ft. subject to phase I results.



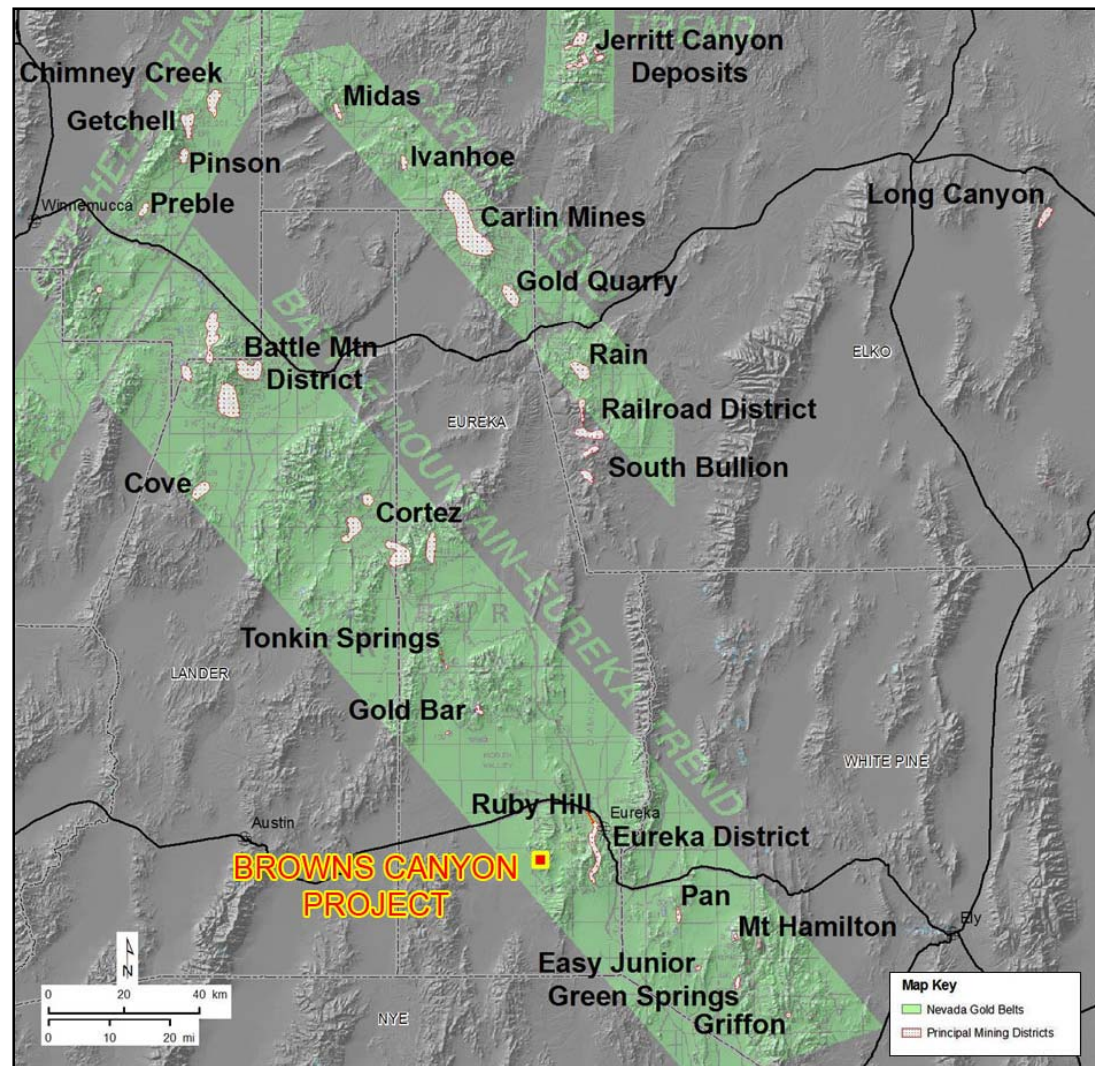


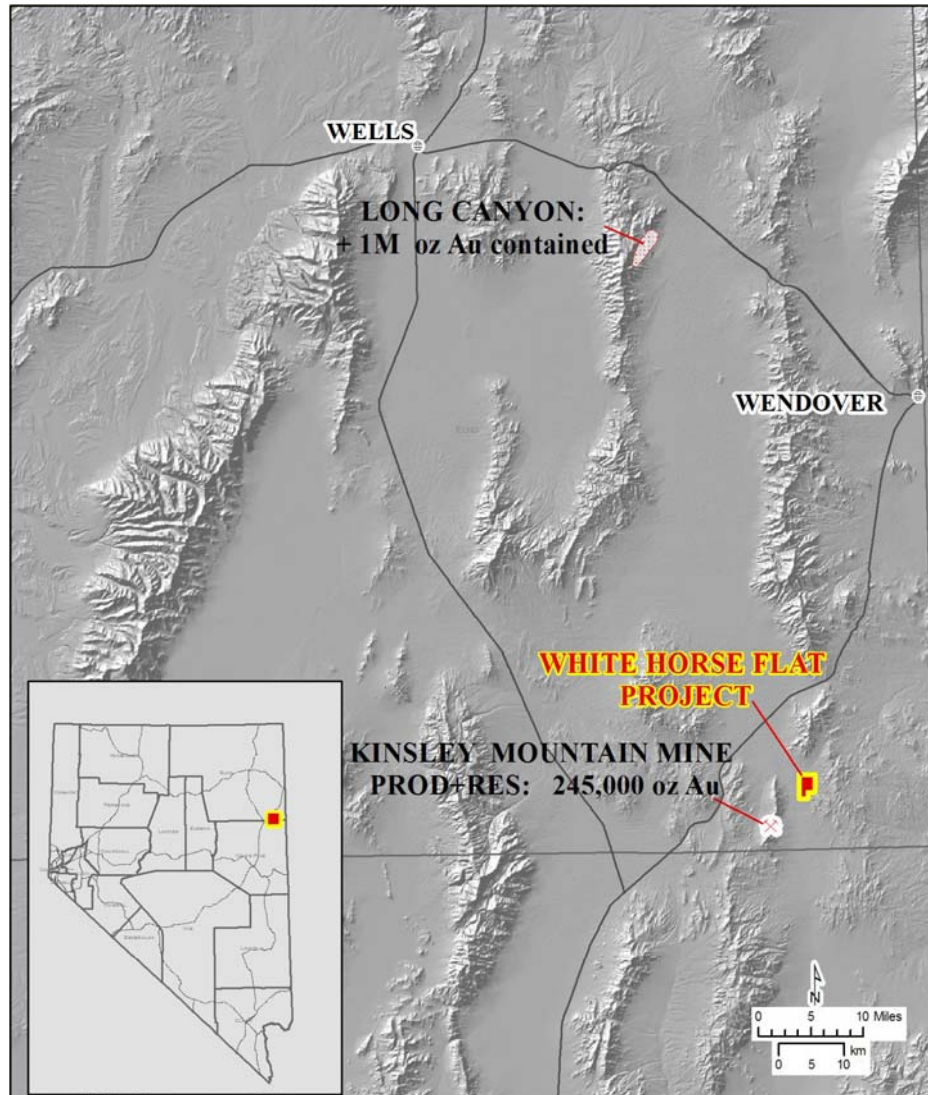




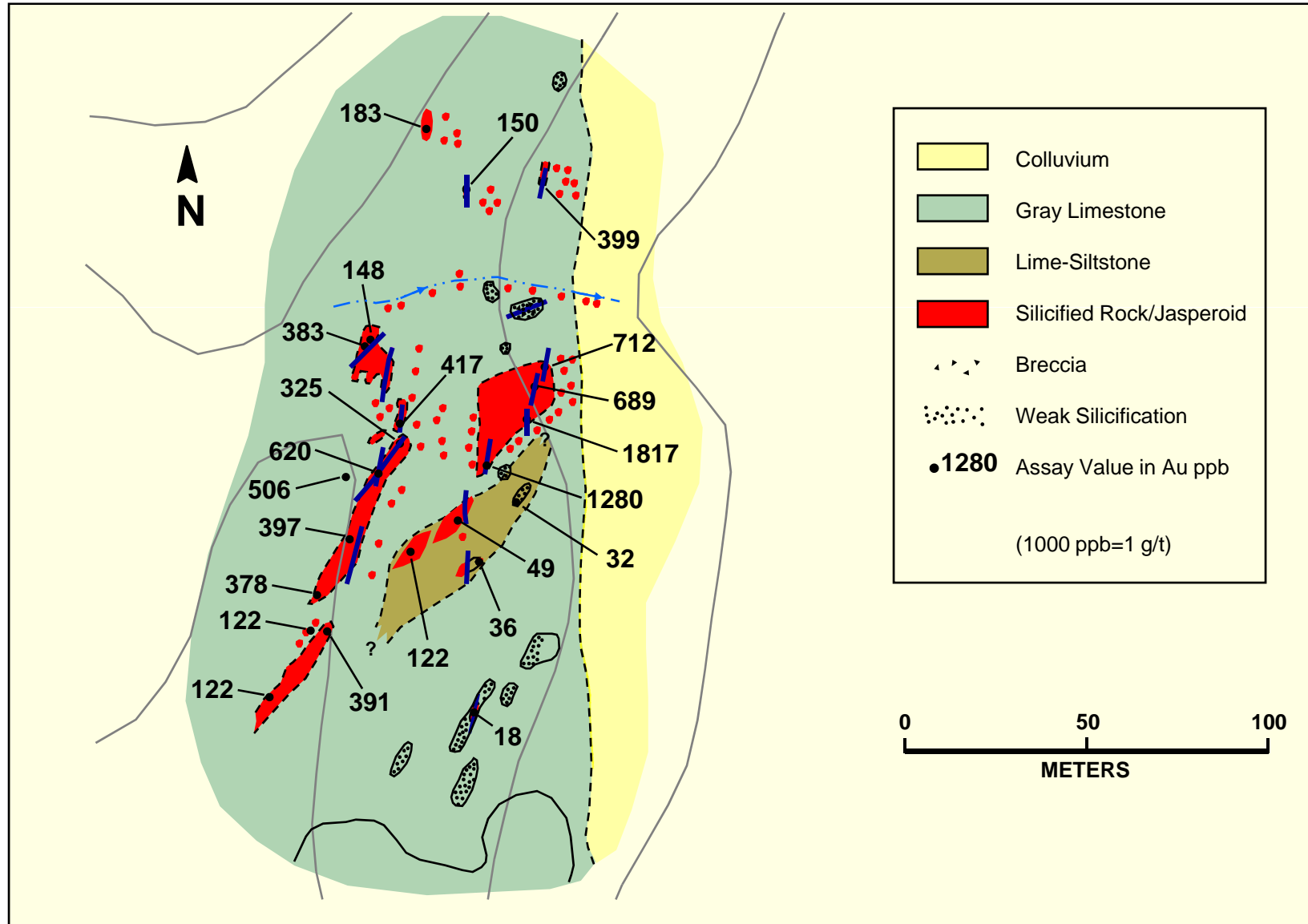
- Recent sampling yielded gold values up to 3 g/t along a zone of silicification, sparsely exposed through cover, with a strike length of 2,000 meters.
- The mineralization is Carlin-style, hosted in Devonian and Mississippian limestones, shales and siltstones.
- Seven widely-spaced historic drill holes are present, with the best intercept being 9 meters of 0.82 g/t gold. Much of the strike length of the mineralized zone is untested by drilling.
- Drilling is planned to commence in the Fall of 2011 with a 15 hole 7,500 feet (2,300m) program.

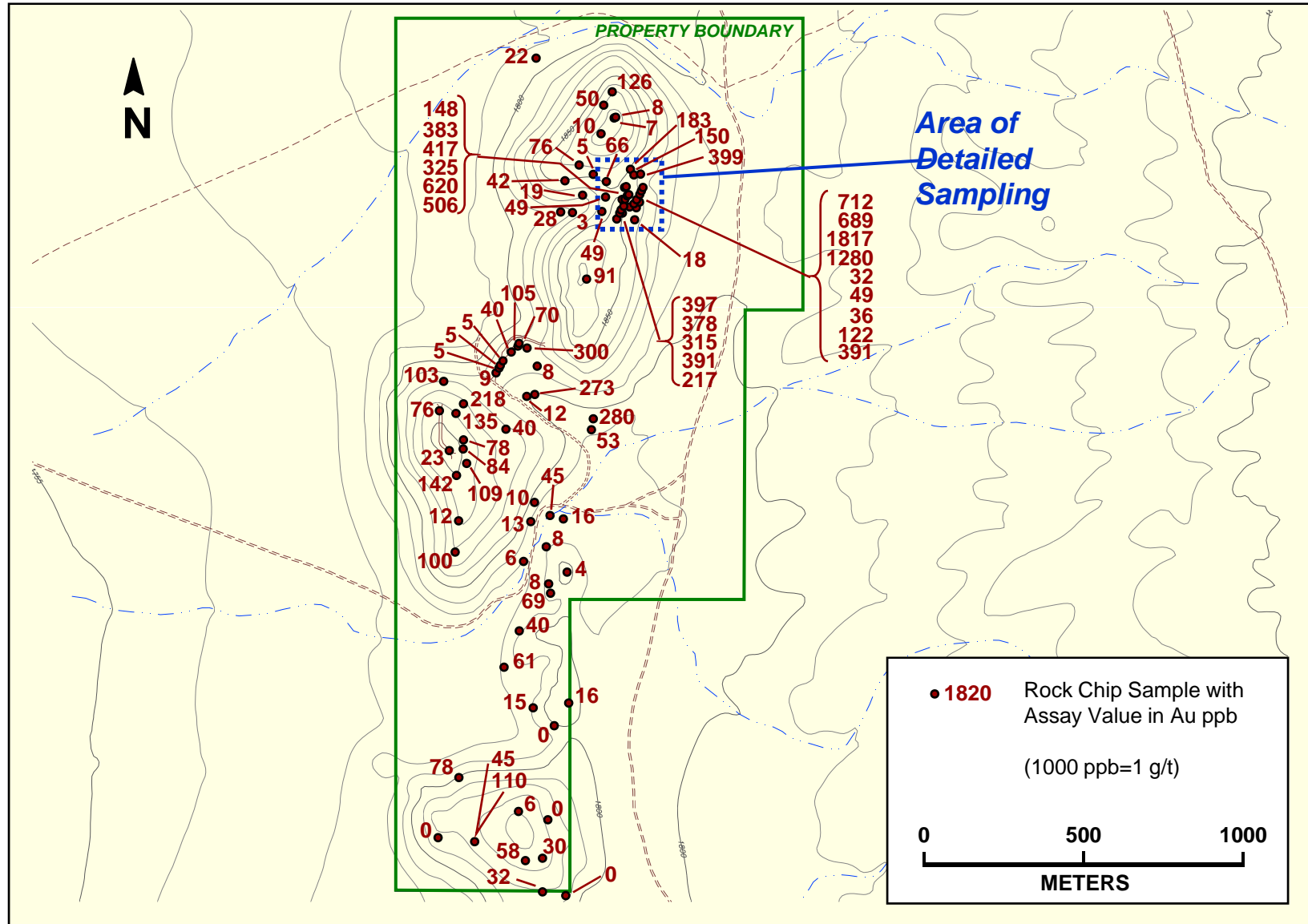
Note: Where assay values are indicated as "up to", the range is from "nil" up to the value indicated.



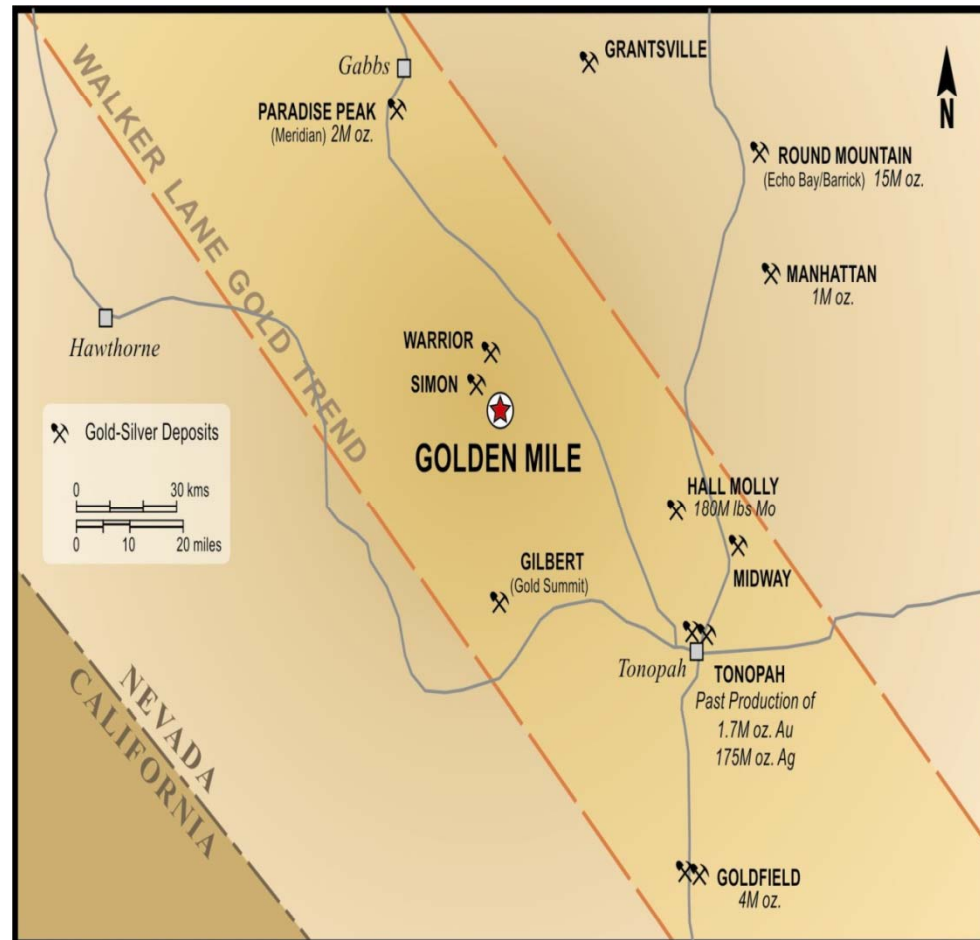


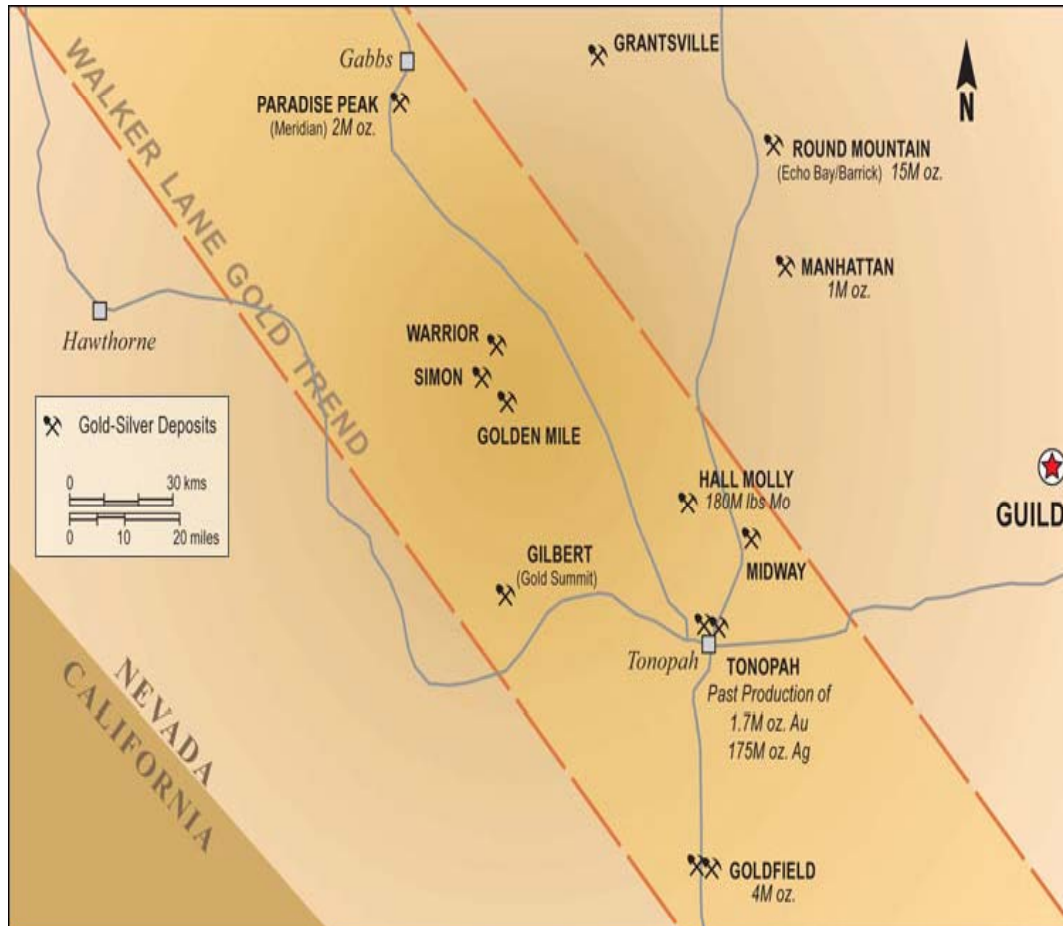
- Silicification forms a belt with common lieegang banding and widespread anomalous gold (from 30 to 1,817 ppb), associated with anomalous arsenic, antimony, and mercury.
- Sampling delineated an area approx. 165 m long and 60 m wide (550 ft long and 200 ft wide) yielding assays from 0.32 to 1.82 g/t gold. The zone is covered with alluvium on its north and east sides.
- The mineralization is Carlin-type and the property is positioned over drill targets with no previous drilling.
- JV partner Navaho Gold planning up to 6,500 ft (2,000m) of drilling in 10-12 RC holes.





- Walker Lane Gold Trend.
- Past production of 10,000 tons grading 1.9 g/t Au in the 1930's.
- Drilling in the 1970's and 1980's by Battle Mtn Gold included a drill intercept of 16 g/t Au along 29.5 m, which included 47 g/t Au along 9.1 m.
- Drilling in early 2006 by Columbus consisted of 2,345 metres in fifteen shallow holes; important intercepts included 7.6 m of 4.2 g/t Au and 9.1 m averaging 13.8g/t Au, including 3.1 m of 28.94 g/t Au.
- Open to the north-west and at depth.
- JV partner Roscan Mineral Corp. planning up to 3,000 ft (900m) of drilling in core 6 holes in the first half of 2011.

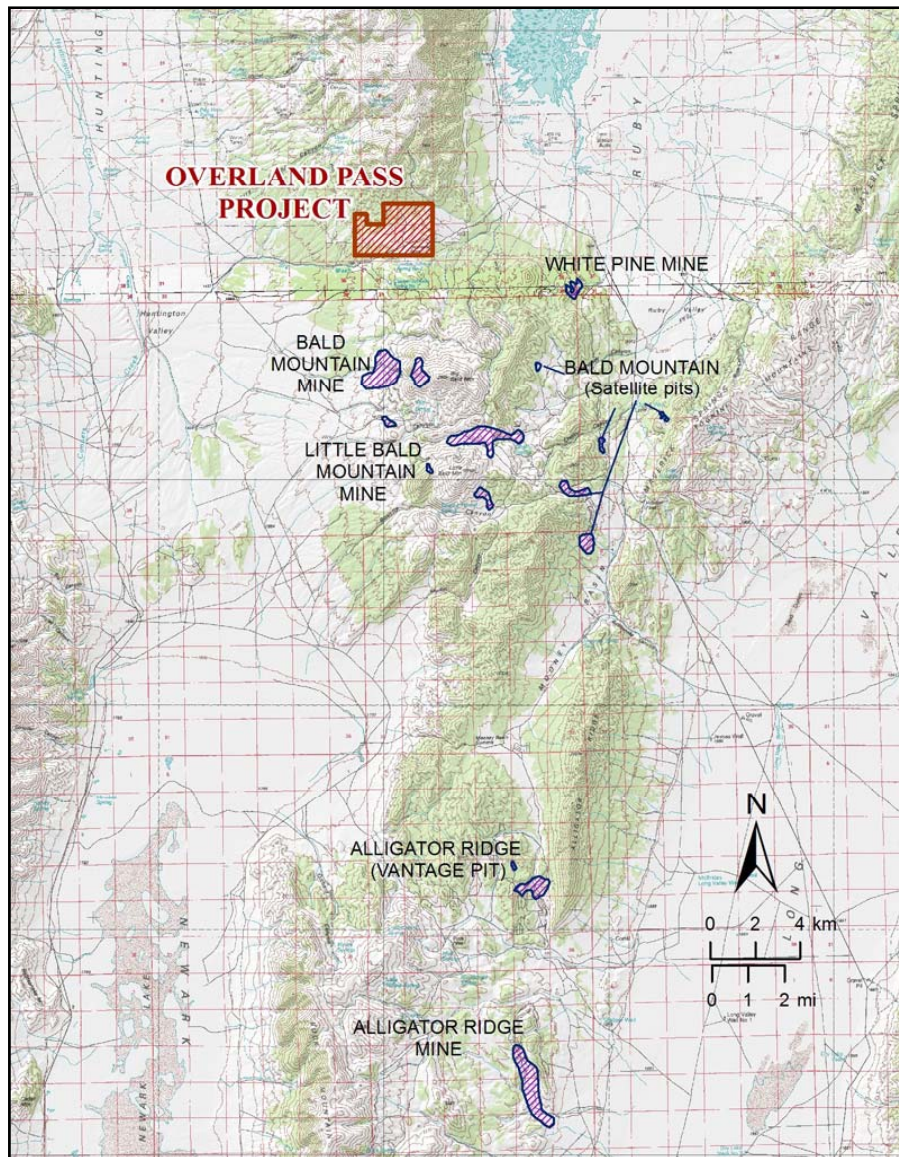




- Target is an ore-controlling structure extending 1.6 km (1 mile) under shallow post-ore cover between the main Guild gold showing and a jasperoid in an area to the south, where it crosses the inferred position of the Roberts Mountain Thrust Fault.
- The structure should cut the Mississippian Webb Formation in the south end of the block (host for the Rain, Dee, and various other Nevada disseminated gold mines).
- Important structures under cover have been identified from gravity and CSAMT surveys.
- JV partner Sniper Resources completed a Phase I, 21 hole drilling program in March 2011, consisting of 11,810 ft (3,600m).



- The property covers altered Roberts Mountain Formation exposed in the windows beneath the Roberts Mountain Thrust Fault. Gold mines in similar geological settings yielded the best gold grades and tonnages in the history of Nevada gold production.
- Sampling in hydrothermally altered areas returned gold (to 364 ppb), arsenic (to 1,500 ppm), antimony (to 100 ppm) and mercury (to several ppm). These elements in limy sedimentary rocks and altered Tertiary dikes are diagnostic of Carlin-type gold mineralization.
- A 6,000 ft long arsenic anomaly with samples ranging from 75 to 1,500 ppm arsenic has been identified with gold values from 20 to 364 ppb occurring intermittently along the anomalous trend. A 12 hole, 5,000 ft (1,500m) drilling program is planned for the Fall of 2011.



- Located just north of Barrick Gold's Bald Mountain Gold Mine, on the southern extension of the Carlin Trend.
- The geologic setting is similar to Alligator Ridge and Rain which are sediment hosted gold deposits.
- Sampling at Overland Pass has yielded gold from silicified zones and breccia in the Pilot Shale and Joana Limestone. The favorable Pilot/Joana stratigraphic sequence is present for approximately 3 km (2 miles) of strike length on the claim block. Gold values range from anomalous to **15.5 g/t Au (0.45 opt)** in surface sampling, with nine samples exceeding 3 g/t (0.10 opt) Au range.
- JV partner Sniper Resources has planned a drilling program for up to 20,000 ft (6,100m) in up to 24 holes.



Columbus Gold
CORPORATION

1 888 818 1364

www.ColumbusGoldCorp.com